

In this issue

Rules for Rockhounding	2
Vote on new Board members	2
Wire Wrapping Class	2
Winter Bazaar	3
December Party	4
Juniors	5
Steens Mountain Escape	8
Cut and polish in the shop	15
Grit and oil	15
Committees	16
Lapidary Shop	19
Connect with us	20
Our Board	20
Rock lovers everywhere	21
Trips and Shows	21
Maps	22

November meeting

Monday, November 18 at 7 pm

Bruce Samuels will talk about obsidian at the meeting this month. He will have specimens of several types of obsidian. If you have a favorite piece of obsidian that you would like to show people, bring it for Show and Tell. Of course, you may bring some other kind of rock instead.

Bruce will talk to the Juniors about volcanic rocks this month. The Juniors meet at 5:30 pm.

If your last name begins with A - M, please bring a snack to share.

December meeting

We will get together in December on the 2nd Monday, December 9 at 6 pm. Please read *December Party* later in this issue.

Banner image

This specimen is a gorgeous piece of velvet rainbow obsidian from the Cenozoic of Mexico. The photo is by [James St. John](#) and is published here under the Creative Commons license [CC BY 2.0](#).

Rules for Rockhounding

In last month's News, Jim Miller's interesting "Beach Wonders at Wild Rialto" described visiting Rialto Beach on the west coast of the Olympic Peninsula. Because the peninsula's western shore is part of the National Park, he pointed out that "rock collecting is technically illegal". Jim added that he had heard that park rangers might not enforce the law for only a couple of rocks.

But you should be aware that "Collecting, rockhounding, and gold panning of rocks, minerals, and paleontological specimens ... is generally prohibited in all units of the National Park System (36 C.F.R. § 2.1(a) and § 2.5(a)). Violators of this prohibition are subject to criminal penalties."

Vote on new Board members

At the November meeting our members will vote on whether to elect our candidates for new Board members for 2025. If the new candidates (shown in bold) are elected, our Board next year will consist of these people:

President: Chris Huffines

Vice President: Angela Vitense

Treasurer: Lisa Rammell

Secretary: Raven Happy-Thompson

Members at Large: Paul Newby

Marion Richards

Nathan O'Brien

Crister Sausler

Wire Wrapping Class

If you signed up for the wire wrapping class with Char Jorgensen, *remember to bring a cabochon to wrap, \$40, and a lunch.* The class is

November 16th

10 am to 4 pm

If you did not sign up and would like to attend, you may email Mel to see whether there is still room at

classes@maplewoodrockclub.com.



Winter Bazaar

December 7 – 8 from 10 am to 5 pm

Tell your friends and neighbors to about our Winter Bazaar – the perfect place to pick up holiday gifts. On December 7th and 8th a host of vendors will be selling finished products that make excellent gifts for rockhounds and nearly everyone else.



The poster features a green background with a white jagged-edged logo in the top left corner that reads "MAPLEWOOD ROCK & GEM CLUB". The main text "JOIN US AT OUR WINTER BAZAAR!" is centered in white, with "WINTER BAZAAR!" in a larger, bold font. Below this, the dates and location are listed: "December 7-8, 2024; 10am-5pm" and "8802 196th St SW, Edmonds, WA". A list of vendors is on the left, and three images of jewelry are on the right.

MAPLEWOOD
ROCK & GEM
CLUB

JOIN US AT OUR
WINTER BAZAAR!

December 7-8, 2024; 10am-5pm
8802 196th St SW, Edmonds, WA

Addisea Gems
Heartwarming Crystals
Katy's Custom Gems
Triple A Rockhound
The Natural School
Martin Trust Stones
Grand Products
DandyLion Crystals & Jewelry
Mike's Rock & Lapidary
Pilchuck Minerals
Ixchel Crystals
Enis' Jewelry
& MORE!



December Party

December 9 at 6 pm

Rather than having a December meeting, we will have a Holiday Party. Our members have enjoyed this tradition for many years, because this is their chance to get to know other rockhounds and lapidary artists. Please come and get to know the new people you haven't had a chance to meet yet and enjoy those others whom you already call *friend*.

December can be so busy! So, we will meet on the 2nd Monday instead of our usual 3rd Monday.

Potluck dinner

Please bring a dish to share at the potluck dinner. You may bring a salad, main dish, dessert, or any of your holiday favorites.



Gift exchange!

Please bring a wrapped gift valued at \$10 or less. Of course, the gifts should be rock-related.

Kids and adults have fun as they watch the presents work their way around the room, and each of us hopes our favorite stops at us.



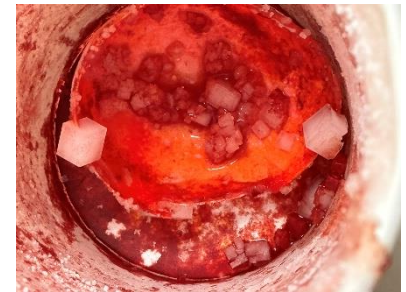
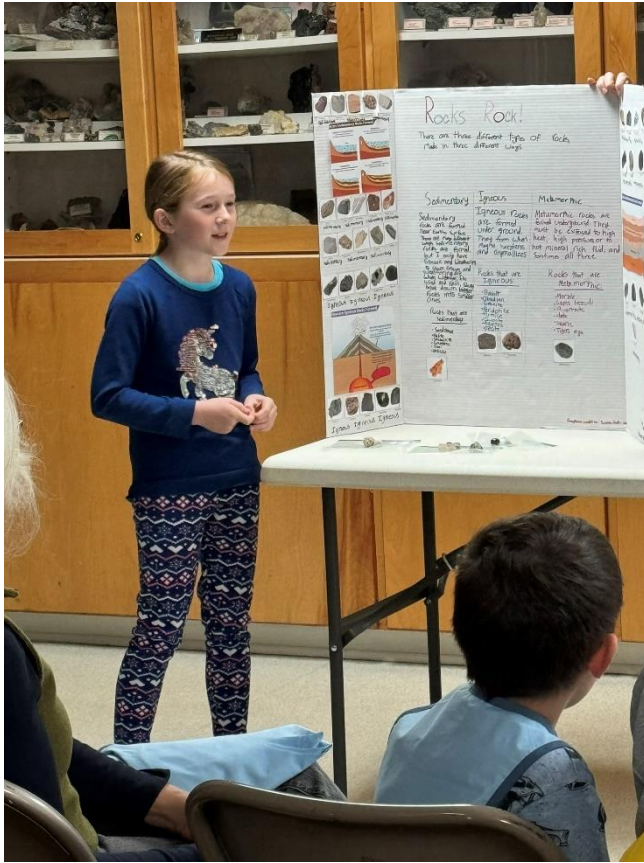
Juniors

Amaryah Daniels

juniors@maplewoodrockclub.com

In October, the Juniors enjoyed show and tell! They had so much fun, they may not have even realized they were working towards their showmanship badge. Some brought specimens from their collection, while others showed off their poster boards of the rock cycle that were carefully compiled for a county fair. Maddox, 7, spoke on his experience with gold panning, and Addi, 8, showed her presentation on Petoskey stones. The juniors had their best turnout yet, with at least 15 kids.





The Rookie Rockhounds also enjoyed seeing the results of their crystal growing experiment from September and determined which saturated solution (sugar or salt) would be more successful. They predicted salt, and they were right! The sugar ended up moldy :(Some crystals grew in cube form while others looked like the fine lines of a snowflake.



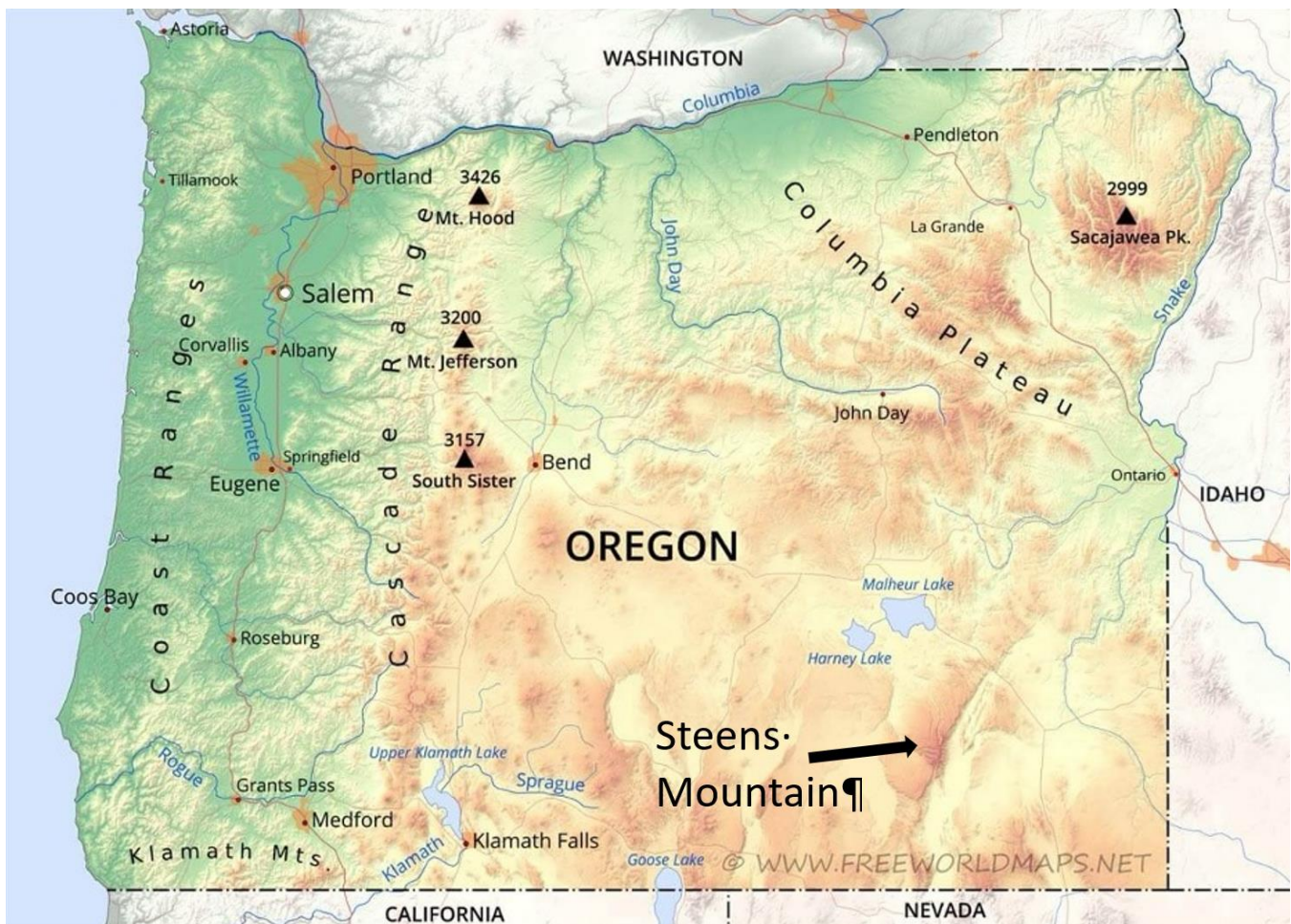
Powell is displaying her collection this month in the juniors display case--check it out!

This month we have a special guest speaker, Bruce Samuels, the obsidian expert, to walk the kids through igneous rocks. The juniors are also building 3D models of volcanoes, and we'll make them explode! Join us at 5:30 pm!

Steens Mountain Escape

By Jim Miller

Remote Steens Mountain in southeastern Oregon has been on my “bucket list” for many years. I finally was able to check this fascinating location off my list in late September 2024. Accessible by typical autos and SUVs, Steens Mountain is a single mountainous ridge that is about 40 miles long and is oriented roughly north-south (see map below).



Steens Mountain is reached from the tiny community of Frenchglen, which is located on Highway 205 about 60 miles south of Burns, Oregon. Founded in 1872, Frenchglen is an historic town with a Mercantile store, a small hotel, and one gas pump with the most expensive gas in Oregon.

The west side of Steens Mountain has a relatively gentle downward slope toward Frenchglen, whereas the east side of the mountain is precipitous and borders the Alvord Desert. The Steens Mountain Loop Road originates in Frenchglen and extends some 26 miles up the gently sloping west side of the mountain to the summit area. At the time of my visit, the gravel-surfaced loop road was fairly well graded and no problem for driving.

Steens' summit is approximately 9,700 feet high, towering almost 5,000 feet above the Alvord Desert to the east. The photo on the following page shows the summit area as viewed toward the northwest from the Alvord Desert.



There are two campgrounds on the Steens Mountain Loop Road. I stayed two nights in a fairly primitive campground at an elevation of about 7,500 feet. While a bit rough, I was able to camp within a small grove of aspen trees that were beginning to change leaf color to a pleasing golden yellow (see below). Very few trees exist above the elevation of the campsite.



I was met at the campsite by my son Evan and his dog Huck. Evan lives in Boise, and this was a wonderful opportunity to share this adventure with my son. We drove to the summit area to gain incredible views to the north, east and west. The photo below shows the three of us near the summit, with the Alvord Desert far below.



Taking the first side road near the summit, we reached perhaps the most famous viewpoint on the mountain -- Kiger Gorge. Owing to the high altitude of Steens Mountain, it supported a thick sheet of ice during past glacial episodes. Valley glaciers developed within several small drainages that had their sources in the summit area. As captured below, Kiger Gorge is a classic glacially-carved valley with U-shaped valley walls. During our visit, one spot near the crest of the valley boasted a small remnant snowfield from the previous winter.



Another spectacular glacially gouged gorge that hosts the Little Blitzen River is present on the west side of the mountain (see below).



Geologically, Steens Mountain is located at the northern end of the Great Basin Physiographic Province and is the largest topographic feature in the northwestern part of the Great Basin. Following the onset regional volcanic eruptions that covered much of eastern Washington, eastern Oregon, and southwestern Idaho with immense flows of basaltic lava, the Great Basin began experiencing crustal widening about 17 million years ago. That crustal extension resulted in many nearly linear fault-bounded mountain ranges. Deep valleys developed between adjacent mountain ridges. These valleys often supported large lakes during wetter and colder glacial periods. The Alvord Desert east of Steens Mountain is located in one of these inter-mountain valleys that hosted a large lake in the past. Fine-grained sediments have accumulated on the floors of these ephemeral lakes, as seen in the Alvord Desert photo here.



Steens Mountain is composed of many layers of basaltic lava. Layer upon layer of volcanic flows are visible on the east face of Steens, as well as within Kiger Gorge. Typical basalt is gray to dark gray in color and fine-grained in texture. But the summit area of Steens exposes a very unique coarse-grained lava flow that is interlayered with typical fine-grained basalt. This unusual basaltic lava is pictured below. The whitish shapes in the rock are large crystals of plagioclase feldspar up to about 2 inches across.



It takes a very long time of slow magma cooling far below the ground surface for crystals of this size to develop. Yet this coarse-grained lava is interlayered with typical fine-grained basalt that erupted with little time for crystal development. This unusual occurrence of two different lava types suggests that different sources of magma were erupting simultaneously. One magma source had very old coarse-grained basaltic lava, and the other source contained fresh lava more typical of that found in eastern Washington.

Despite its remote location, Steens Mountain is a spectacular destination worthy of exploring. The summit area can be examined easily in one day. Trails are available for longer visits by hiking enthusiasts. Put amazing Steens Mountain on your "bucket list"!

Jim Miller

Cut and polish in the shop

As we head into fall it's time to dig out those unfinished cabs and chunks of rock you've been meaning to slab. Now is a good time to lock in your session in the shop. Make a reservation online. We have a new online signup form that makes it easy. If you have questions, contact the shop at shop@maplewoodrockclub.com.

Discover Pass Free Days

Normally, you need a Discover pass to park at Washington state parks, Washington Departments of Fish and Wildlife land, and Natural Resources (DNR) land. But, on the following days, you don't need a pass.

Nov. 29 – Autumn Day



Grit and oil

Grit and oil for sale

The Shop Stewards have grit. When the shop is open you can buy grit or oil. Please email them a day ahead of when you will stop by to purchase grit: shop@maplewoodrockclub.com

Each grit package is \$4, and this is what they sell:

1 lb of 60/90

1 lb of 120/220

¾ lb of pre-polish

½ lb of polish

Gallon of oil for \$20

Committees

Our club could not provide benefits to our members without the generosity of volunteers giving their time and talents to plan, organize, lead, communicate, and more.

Most of our committees are humming along under the leadership of members who have stepped up to help. But there are several committees without chairs and others have chairs who want to form teams to accomplish their jobs. Look for the bold committee names below. Will you step into one of these openings?

Committee	Chairs or Leaders	About this role
Classes	Open	Find people to lead classes. Submit announcements about classes to the newsletter and Website Editor. Announce upcoming classes at meetings. Organize class enrollment.
Cleaning	Open	This could be a team of 6 or so. They will clean the interior of the building, purchase consumables like paper towels and cleaning products, and resupply the restrooms with paper towels and toilet paper.
Community Displays	Joy Wiley	Puts temporary displays in libraries and elsewhere in our community.
Building Maintenance	Open	Notices things that need fixing or maintenance and either takes care of them or finds someone else to do them.
Field Trips	Marion Richards Open: helpers needed	Marion finds people to lead field trips. Help coordinate signups and getting waivers signed.

Committee	Chairs or Leaders	About this role
Groundskeeper	Crister Sausler	Keeps the grounds looking nice by organizing an annual work party and by doing the regular upkeep.
Historian	Open	Maintains a store of historical copies of photos, donation records, and other data the club might want to retain.
Juniors	Amaryah Daniels	
Kitchen	Carla James	Organizes snacks for meetings.
Lapidary Shop	Rich Osborne, Bruce Samuels, Ashley Martin, Nathan O'Brien Marion Richards	They serve as shop stewards, maintain the tools in the shop, and organize work parties to clean the shop.
Library	Nancy Ross	Tracks borrowing, buys books, and organizes the library.
Membership	Bruce Samuels	Welcomes new members, orders name badges, manages member applications and renewals.
Newsletter	Nancy Samuels	Writes and emails the newsletter to all members in the week before our general meetings.
Publicity	Marion Richards	Advertises for shows on Facebook and fliers.
Parliamentarian	Open	Ensures we follow Roberts Rules of Order during meetings.
Rentals	Craig Kosovich, until someone else volunteers	Serves as the contact person for renters. Accepts rental contracts, checks to see that renters left the building clean.

Committee	Chairs or Leaders	About this role
Seattle Regional Gem and Mineral Shows Liaison	Nancy Samuels	Our club, the North Seattle Rock Club, and the West Seattle Rock Club are members of this organization. Together we own the shed where we store shared display cases for shows.
Shows	Need two people	Plan and organize our Spring, Summer, and December shows.
Sunshine	Nancy Ross	Sends cards to members who are ill or who would be cheered by a card.
Washington State Mineral Council	Nathan O'Brien	Our club, and nearly all rock clubs in Washington are members of this organization. Nathan represents our club at their monthly meetings.
Ways and Means	Angela Vitense Mary Garvey	They process and organize donated items, as well as get estimated values, set prices, and record descriptions. The team manages the club's sale tables at each show.
Website	Lynz Taylor	Updates the website content and adds/removes features as needed. Pays the hosting and domain registration fees.

Lapidary Shop

Our lapidary shop is reserved for members who have paid their dues. Inside are five slab saws, three CabKing™ machines for polishing cabochons, and two trim saws.

Sign up for shop time

All shop users must sign up for a time slot at least a day before the session. On their first visit, new shop users will be trained on shop procedures and safety before being able to use any equipment.

You can [sign up for shop time online](#). The system will send you a confirmation email which you should save until after your session. You will need the email if you need to cancel your reservation. Each Thursday and the 1st and 3rd Wednesdays we have two shop sessions available:

- Session 1: from 3:00 to 5:30 pm
- Session 2: from 5:30 to 8:00 pm

How to cancel

If you sign up for shop time online and later realize you won't be able to make it, you need to cancel your reservation no later than two days before the session. So, if you are cancelling a Thursday time, you need to cancel by Tuesday at midnight. This enables someone else to sign up. *If you do not cancel, you will be charged for the session.* To cancel, click the link in the confirmation email you received.

What to bring

You need to bring \$10 (cash or check) to pay for the session. Additionally, you might like to bring these:

- Face mask to not breathe rock dust or for Covid protection
- Hearing protectors

Before you leave the shop

The shop stewards are volunteers who generously give 6 hours a week to enable us to use the tools. Before you leave a tool station, please wipe it down and leave it in the same condition as you found it. If you discover a problem with a saw or tool, please let the Shop Steward know.

Shop Stewards

Rich Osborne
Bruce Samuels
Ashley Martin
Nathan O'Brien
Marion Richards

Shop@maplewoodrockclub.com



Connect with us

Website: <http://www.maplewoodrockclub.com/>

Facebook page: Maplewood Rock & Gem Club

Facebook group for members: MRGC Sales and Trades

Email us: info@maplewoodrockclub.com



Address: 8802 196th St SW, Edmonds, Washington 98026

Our Board



Our club is run entirely by volunteers; and we are grateful for the time, energy, and expertise they give to our community.

President: Chris Huffines

Secretary: Nancy Samuels

Treasurer: Bruce Samuels

Past President: Michele McGraw

Members at large: Paul Newby,

Marion Richards, and Nathan

O'Brien.

Image licenses

We use abbreviations in the license attributions. Here are the definitions.

CC: Creative Commons license

BY: attribute the author, link to the license, and indicate if changes were made.

SA: share alike - If you publish the image, you must use the same license.

ND: no derivatives - You may not alter the image.

NC: non-commercial use - You may not use the image for commercial use.

3.0 or other number: version of the license

Rock lovers everywhere

Trips and Shows

There aren't any shows left this year, except ours on December 7 and 8.

Date and Time	Host and Location	Details
December 7 - 8	Maplewood Rock and Gem Club	Holiday Gift Show

Appearances are deceiving

Its pretty, it glitters, but it's only fools gold.



Washington State Mineral Council

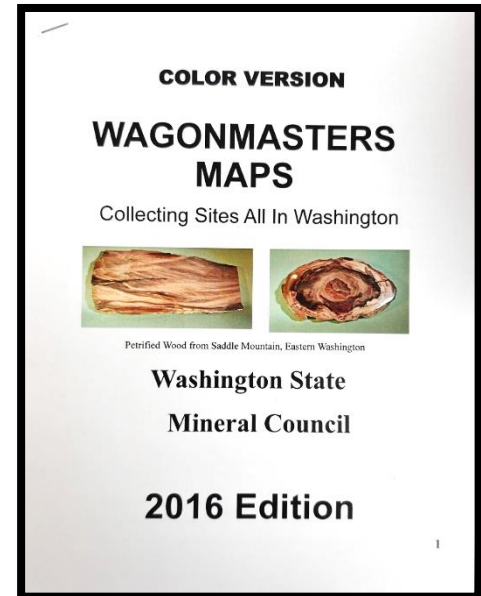
Our club, along with many other rock and gem clubs in the state, is a member of the Washington State Mineral Council. This organization helps us by

- advocating for access to public lands
- advocating for beneficial land use policies
- compiling and sharing maps and other information
- publicizing shows and field trips so members learn about and can participate in events at other clubs

Read their latest [Newsletter](#).

Maps for Rockhounds

The Washington State Mineral Council has put together a 62-page booklet with maps for finding rock hounding sites. You can buy a copy for only \$20 at the meeting.



Seattle Regional Gem and Mineral Shows Committee

Our club is a member of a Seattle area organization of rock clubs. Together we share wooden display cases that we use at our shows. These cases are stored in the new shed behind our building. The other member clubs are the North Seattle Lapidary Gem and Mineral Club and the West Seattle Rock Club.

Northwest Federation of Mineralogical Societies

Our club is a member of the Northwest Federation of Mineralogical Societies: <http://Northwestfederation.org>. We email their newsletter to our members each month.

Sister Club in Australia

Our sister club in Australia is the Atherton-Tableland Mineral & Lapidary Club in Tolga, Queensland. Connect to them on Facebook:

www.facebook.com/groups/197340266987276

One hundred million years ago the eastern edge of the Australian continent extended much farther to the east. Tectonic forces broke off and submerged the eastern section into the ocean while a rising mantle caused the remaining land to lift.

Beginning 4 million years ago large basalt flows filled river valleys and formed a relatively flat landscape. Following that period the volcanoes became more gaseous spewing lava in violent eruptions. This landscape is now called the Atherton Tablelands. You can learn more on Wikipedia.



News to share?

Did you go rockhounding? Have you acquired a beautiful new specimen? Please send stories, images, or simply ideas for articles that Nancy would write to the newsletter editor, Nancy Samuels at MRGC@nancysamuels.com.

This issue

Maplewood Rock and Gem Club News

Volume 11

, Publication year: 73