



In this issue

Juniors 2

Can you help ID rocks? 2

Looking for help 4

Building Maintenance 4

Web Editor 4

Sparkle 5

Ways and Means 5

Pyrite Collecting in Spain 6

Our Maplewood Club 14

Committees 14

More Lapidary time 17

Lapidary Shop

Cancellations 17

Lapidary Shop fee 17

Lapidary Shop 18

Connect with us 19

Our Board 19

Rock lovers everywhere 20

Trips and Shows 20

Discover Pass Free Days

23

Maps 24

April meeting

Monday, April 15th

General meeting at 7 pm

Juniors meet at 6 pm

Nathan O'Brien will do the Rock of the Month presentation on "The Art of Finding Rocks". Antha Huffines will make a presentation to the Juniors.

Paul Newby will have a silent auction set up for you to bid on items for your collection.

If your last name begins with a letter from N to Z, please bring food to share. Many of our members come to the meeting straight from work; these snacks are especially appreciated by them and others who haven't had time to have dinner.



Banner image

The banner photo is a diamond taken by [MECO](#) and published under the [Pixabay license](#).

Juniors

Amaryah Daniels

Juniors@maplewoodrockclub.com

We are looking forward to having our oldest Junior member, Antha Huffines, give a presentation to the younger members.



Can you help ID rocks?

We're looking for a few people to help with our April meeting, specifically with helping the juniors ID their rocks. please reach out to Amaryah if you can lend a hand: amaryah@gmail.com.

Juniors Display Case

The lower right shelf of the wooden display case holds collections of individual Junior members.

Debbie Wood (9) displayed her collection in March.



Antha in front of the display case

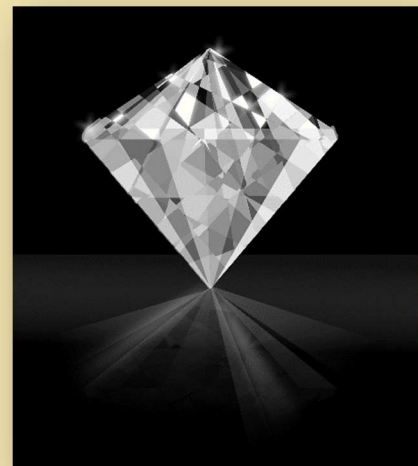
If you were born in April

Happy Birthday!



“A diamond is a chunk of coal that
did well under pressure.
~ Henry Kissinger

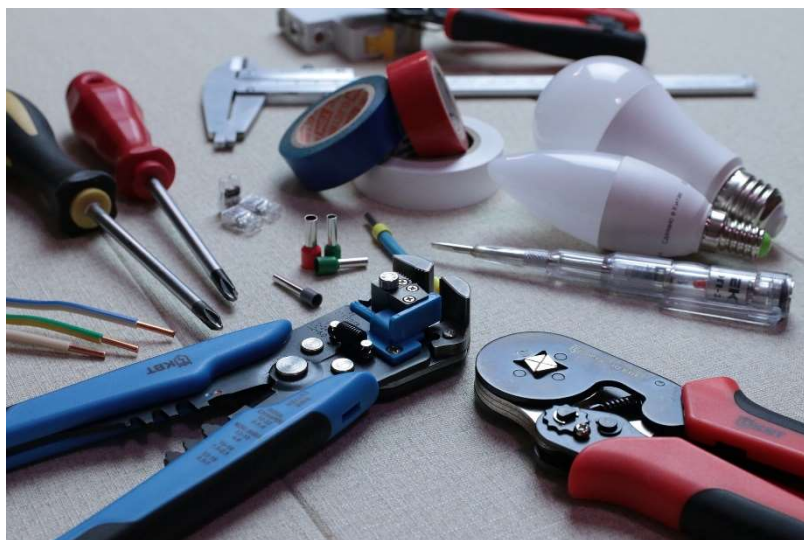
If you were an April baby, diamond is your birthstone. Diamonds set the standard for the most durable of gems, which is a good thing because they form 100 miles underground. They can take their time being pushed up by volcanic activity to near the earth's surface where they are mined, because all diamonds are incredibly old. The oldest diamonds are 3.5 billion years old and the youngest are still a couple billion years – by far older than dinosaurs!



Looking for help

We have some important volunteer openings for lone wolves and those who prefer working in pods. Without paid staff, we rely on the generosity of our members to oil the saws and sweep the floors. Later in this issue is a list of all our committees, some of which are looking for help.

Here we are focusing on finding people to step into several critical positions.



Building Maintenance

We need a person to be in charge of maintaining and fixing things around the building or finding others to do the work. Are you handy? Know how to change a furnace filter and smoke detector batteries? Please ask a Board member about helping out with this job.

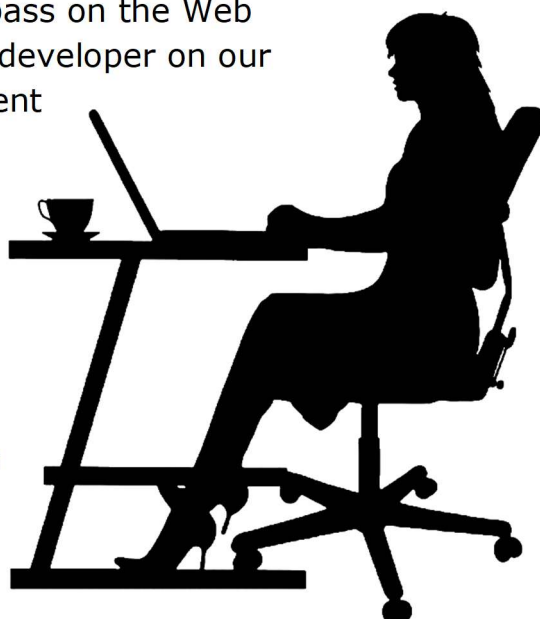
Web Editor

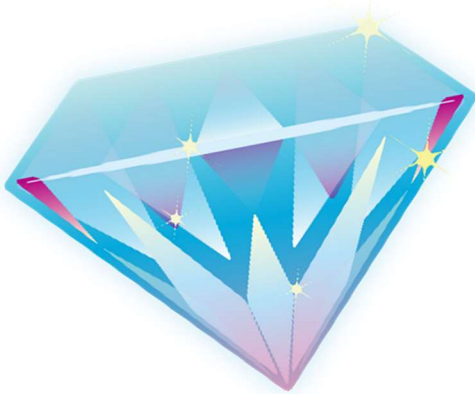
Mel Milnes, our current Web Editor, is ready to pass on the Web duties to someone. Mel was a key designer and developer on our current website, and she has managed the content for many years.

The basic webmaster skill requirements begin with being familiar with

- WordPress
- the Elementor plugin

If you are interested in learning more about this important role in our club, please contact Mel Milnes or Carla James who is our Web Administrator.





Sparkle

The Board set up a new committee and is looking for a team of people who want to work together. This new Sparkle committee will decide how they share the job. They might organize work parties of club members to get some work done, like a spring garden cleanup. They might choose to divvy up the tasks and have a couple team members share each one. It's up to the team. Or the committee could be one person who schedules volunteers to get the work done.

The Sparkle Committee will handle these tasks:

- Clean the building once a week. This includes floors, bathrooms, kitchen, and the main room.
- Clean the building before rentals. This can be the weekly cleaning.
- Purchase bathroom, kitchen, and cleaning supplies as needed.
- Have a system for occasionally purchasing supplies for other committees, like getting paper towels for the Lapidary Shop.
- Mow the lawn and maintain the grounds.

Ways and Means

We already have an experienced person on Ways and Means, Linda Willemarck; we only need a couple more to make it a team. This is a perfect job for people who enjoy working with others. This team will

- Maintain an inventory list of the specimens that can be sold. Try to identify the items and their values.
- Set up and staff the sales table at our shows or find volunteers to do so.
- Use Square to take credit card payments.
- Fill out Income Forms to tell the Treasurer exactly what the money collected was for.



Pyrite Collecting in Spain

By Jim Miller

In May of 2012 I took a fascinating week-long trip to Spain. This wasn't a typical tourist visit. Along with six other mineral collectors from the USA, we spent three days in search of iron pyrite crystals and one day at another location seeking purple fluorite. We spent the rest of the time driving across northern Spain in a very cramped passenger van. This crystal-collecting caper was guided by Bob Jackson, the well known owner of "Geology Adventures" and a mineral collector extraordinaire. Bob is pictured below, showing off our rented and "roomy" vehicle.



We saw many interesting and photogenic places in northern Spain, such as the village below, nestled in an ancient terraced landscape.

The pyrite mine is located near the small village of Navajun, with a population of less than 15 people and probably twice as many cats.



At one time the town had more than one thousand inhabitants dating back to the era of Roman occupation. Almost all of the buildings and walls in the town are constructed of flat stone. Now the only activities in the town are related to pyrite mining, small-scale agriculture, and sheep herding.

A narrow street in this old town is shown below. The second photo below shows the ancient church of Navajun and the hilly terrain nearby.



Our group of rockhounds stayed at a lovely small hotel in the town of San Felices, which is located about a half-hour drive from Navajun. Picturesque San Felices is shown below. Note the ancient Roman ruins on hilltop to right of town. It was an adventure just walking around this beautiful village.



The pyrite mine near Navajun produces world-famous cubic pyrite crystals of amazing quality. Bob Jackson had met the mine owner 15 years earlier at the Tucson rock show, and after several years of discussions, Bob had arranged for our group to be the first outsiders to actively collect pyrite crystals at the mine site. Of course, we paid a handsome fee for this opportunity, but it was a once-in-a-lifetime experience.

We met Don Pedro (the mine owner) in Navajun, where he served us a great lunch with local red wine. After lunch and discussions, we drove about three miles on a steep gravel road to his pyrite mine. As we approached the mine, the ground began to sparkle with bright reflections from the flat surfaces of pyrite crystals. I was totally amazed, and we had not even reached the mine yet!

As shown here, the mine consists of an open cut into inclined sedimentary rock on the side of a hill.



The mine owner and his assistant showed us the layers of gray, slightly metamorphosed siltstone that hosts the crystalline cubes of pyrite. With great enthusiasm, we began breaking off chunks of the siltstone to expose the abundant pyrite crystals. We could break off slabs of the host rock fairly easily by driving chisels or punches into the rock face. Shown here is our group attacking a siltstone exposure with abundant brassy pyrite cubes beckoning for removal.



The amazing aspect of the siltstone host rock is the quality of the perfectly formed cubes of pyrite contained within the rock. I'm accustomed to seeing crystals form in open cavities within rock, where the crystal faces have room to grow unimpeded by the host rock (such as we find in geodes). However, at this location the crystals have developed within the relatively soft host rock with no open spaces around the crystals. Here's what the crystals look like on a freshly broken rock surface.



The crystals themselves were easily removed intact from the host rock. In fact, care had to be taken to collect specimens of the host rock without the crystals falling out. The photo below shows a spectacular pyrite-on-matrix specimen in the mine owner's collection. Many hours of preparation were needed to expose the crystals on this specimen.



We spent two days collecting pyrite crystals at the mine site. During those two days we collected at two different locations within the mine property. The second location had harder matrix rock, but the pyrite crystals were sometimes very large. Pictured below is my friend Michael after he pulled out a huge pyrite crystal from the rock face.



On our third day at Navajun we hiked about a mile along an ancient Roman road to reach a rock exposure at the base of a slope.



The pyrite crystals were smaller here, but very unique. As shown here, the pyrite crystals at this hillside site had complex shapes with multiple flat surfaces at different angles.



I shipped home about 40 pounds of pyrite from Navajun. Mostly I collected loose crystals, but I also brought home some crystals in matrix. The slight iron stains on many of the crystals were removed easily with dilute muriatic acid, producing very bright and shiny surfaces on the crystals. I didn't come home with specimens like the professionally prepared example below, but my findings were treasures nonetheless.



This was a rock collecting adventure that few people in the world experience, and certainly one that I will never forget. Adios Espana!

Jim Miller

Our Maplewood Club

Committees

Our club could not provide benefits to our members without the generosity of volunteers giving their time and talents to plan, organize, lead, communicate, and more.

Most of our committees are humming along under the leadership of members who have stepped up to help. But there are several committees without chairs and others have chairs who are want to form teams to accomplish their jobs. Look for the bold committee names below. Will you step into one of these openings?

Committee	Chairs or Leaders	About this role
Classes	Open	Find people to lead classes. Submit announcements about classes to the newsletter and Website Editor. Announce upcoming classes at meetings. Organize class enrollment.
Community Displays	Joy Wiley	Puts temporary displays in libraries and elsewhere in our community.
Building Maintenance	Open	Maintains the building.
Field Trips	Marion Richards Open: helpers needed	Marion finds people to lead field trips. Help coordinate signups and getting waivers signed.
Historian	Open	Maintains a store of historical copies of photos, donation records, and other data the club might want to retain.
Juniors	Amaryah Daniels open: two assistants and people to speak to the kids each month	The assistants would help Amaryah organize the lessons and get monthly speakers.

Committee	Chairs or Leaders	About this role
Kitchen	Carla James	Organizes snacks for meetings.
Lapidary Shop	Rich Osborne, Bruce Samuels, Ashley Martin, Nathan O'Brien	They serve as shop stewards, maintain the tools in the shop, and organize work parties to clean the shop.
Library	Nancy Ross	Tracks borrowing, buys books, and organizes the library.
Membership	Linda Willemarck	Welcomes new members, orders name badges, manages member applications and renewals.
Newsletter	Nancy Samuels	Writes and emails the newsletter to all members in the week before our general meetings.
Publicity	Marion Richards	Advertises for shows on Facebook and fliers.
Parliamentarian	Open	Ensures we follow Roberts Rules of Order during meetings.
Rentals	Craig Kosovich	Serves as the contact person for renters. Accepts rental contracts, checks to see that renters left the building clean.
Seattle Regional Gem and Mineral Shows Liaison	Nancy Samuels	Our club, the North Seattle Rock Club, and the West Seattle Rock Club are members of this organization. Together we own the shed where we store shared display cases for shows.
Shows	Heather Martin Open: assistants	The new team members would help recruit volunteers before shows and oversee operations during shows.

Committee	Chairs or Leaders	About this role
Sparkle	Open	This will be a team of 6 or so. They will clean the interior of the building weekly, purchase consumables like paper towels and cleaning products, and keep the lawn and gardens kept up.
Sunshine	Nancy Ross	Sends cards to members who are ill or who would be cheered by a card.
Washington State Mineral Council	Nathan O'Brien	Our club, and nearly all rock clubs in Washington are members of this organization. Nathan represents our club at their monthly meetings.
Ways and Means	Linda Willemarck Open: team members	We need a couple people to work with Linda as a team to organize and oversee sales and to keep our specimen inventory organized.
Website Admin	Carla James	Pays the hosting and domain registration fees.
Web Editor	Open-ish	Mel Milnes has been maintaining the web content for many years and is ready to pass it on.

Rock Candy

This photo shows someone carving jade in China.



More Lapidary time

We have some exciting improvements coming for lapidary artists. The Board has decided to move their monthly meetings to Monday evening so that the Lapidary Shop can be open on the first Thursday of every month. That's 25% more shop time. This will begin in June.

Mel Milnes, our Web Editor, has another benefit waiting to be launched. She has installed a new online signup form that is much easier to use. It's currently in beta testing and will be released as soon as it's ready.

Lapidary Shop Cancellations

We have a long standing rule for the shop. If you cancel just before your scheduled session, you need to pay for the session. We haven't been enforcing that rule, but the Board has decided we need to begin. Even with an additional day of shop time each month, we will have more people wanting to use the shop than we have open slots. A scheduled time that is not used is an opportunity lost for one of our members.

The Board has decided that in order to allow enough time for someone else to use a cancelled slot, we need people to cancel a session two days before their time. If you have a scheduled Thursday time, you need to cancel by midnight, Tuesday.

Lapidary Shop fee

Costs for repairs and replacement parts have gone up, and the Board has decided to raise the shop fee to \$10 per session beginning in June.

Grit and oil for sale

The Shop Stewards have grit. On Thursdays when the shop is open you can buy grit. Please let them know a day ahead that you will stop by to purchase grit. To contact the Shop Stewards, email shop@maplewoodrockclub.com

Each grit package is \$4, and this is what they sell:

- 1 lb of 60/90
- 1 lb of 120/220
- ¾ lb of pre-polish
- ½ lb of polish

They also sell saw oil at \$16 for a gallon.

Lapidary Shop

Our lapidary shop is reserved for members who have paid their dues. Inside are five slab saws, three CabKing™ machines for polishing cabochons, and two trim saws.

Sign up for shop time

All shop users must sign up for a time slot at least a day before the session. On their first visit, new shop users will be trained on shop procedures and safety before being able to use any equipment.

You can [sign up for shop time online](#). The system will send you a confirmation email which you should save until after your session. You will need the email if you need to cancel your reservation. Each Thursday we have shop sessions available:

- Session 1: 3:00 to 5:30 pm
- Session 2: 5:30 to 8:00 pm (except on the first Thursday of each month)

How to cancel

If you sign up for shop time online and later realize you won't be able to make it, you need to cancel your reservation no later than two days before the session. So, if you are cancelling a Thursday time, you need to cancel by Tuesday at midnight. This enables someone else to sign up. *If you do not cancel, you will be charged for the session.* To cancel, click the link in the confirmation email you received after you signed up.

What to bring

You need to bring \$10 (cash or check) to pay for the session. Additionally, you might like to bring these:

- Face mask to not breathe rock dust or for Covid protection
- Hearing protectors

Before you leave the shop

The shop stewards are volunteers who generously give 6 hours a week to enable us to use the tools. Before you leave a tool station, please wipe it down and leave it in the same condition as you found it. If you discover a problem with a saw or tool, please let the Shop Steward know.

Shop Stewards

Rich Osborne
Bruce Samuels
Ashley Martin
Nathan O'Brien

Shop@maplewoodrockclub.com



Connect with us

Website: <http://www.maplewoodrockclub.com/>

Facebook page: Maplewood Rock & Gem Club

Facebook group for members: MRGC Sales and Trades

Email us: info@maplewoodrockclub.com

Address: 8802 196th St SW, Edmonds, Washington 98026



Our Board

Our club is run entirely by volunteers; and we are grateful for the time, energy, and expertise they give to our community.

President: Chris Huffines

Secretary: Nancy Samuels

Treasurer: Bruce Samuels

Members at large: Linda Willemarck, Paul Newby, Marion Richards, and Nathan O'Brien.

Image licenses

We use abbreviations in the license attributions. Here are the definitions.

CC: Creative Commons license

BY: attribute the author, link to the license, and indicate if changes were made.

SA: share alike - If you publish the image, you must use the same license.

ND: no derivatives - You may not alter the image.

NC: non-commercial use - You may not use the image for commercial use.

3.0 or other number: version of the license

Rock lovers everywhere



Trips and Shows

Here are many shows and field trips in our area. If you know of a show or field trip not listed here, please contact Nancy Samuels at mrgc@nancysamuels.com.

We have copied field trip information from the [Mineral Council website](#). However, you should check their website for updates. Please contact the person at the club hosting the field trip to let them know you are coming and to learn of any changes to the information given here. Many trips require a Discover Pass, Trailhead Pass & Forest Pass. Ask the host about required parking passes.

Contact information for the clubs:

Club	Contact person	Email	Phone
Cascade Mineralogical Society	Roger Danneman	Roger.Danneman@gmail.com	
Marysville	Ed Lehman	wsmced@hotmail.com	H (425) 334-6282 C (425) 760-2786
Marysville	Nique Wicks	nwhoppyfrog41@gmail.com	(509) 670-0630
Darrington	Nique Wicks	nwhoppyfrog41@gmail.com	(509) 670-0630
Opal	Tony Johnson	ynotopals@outlook.com	(253) 863-9238
Puyallup Valley	Dennis Bachelor		(360) 870-8741
All Rockhounds Pow Wow (small fee)	Larry Vess	vessel3755@gmail.com	(253)473-3908

Date and Time	Host and Location	Details
April 20 8 am	All Rockhounds Pow Wow Saddle Mountain site Matawa Boat Launch	Field trip for petrified wood Bring: Shovel, rock hammer, small pick
April 20	Cascade Mineralogical Society Biggs Junction, OR	Field Trip for Jasper and agate
April 21	Cascade Mineralogical Society Saddle Mountain	Field trip for Petrified wood
April 28	Cascade Mineralogical Society Saddle Mountain	Field trip for Petrified wood
May 11	Cascade Mineralogical Society First Creek	Field trip for Agate, crystals, and geodes
May 18 9 am	Darrington Rock Club Bailey Trail site Verlot Ranger Station	Field trip for chert Bring: rock hammer, large hammer, and pry bar
May 19	Cascade Mineralogical Society First Creek	Field trip for Agate, crystals, and geodes
June 8	Cascade Mineralogical Society Little Naches	Field trip for Thunder eggs, lily pad jasper, and leaf fossils
June 15 9 am	Marysville Rock Club Saddle Mountain Matawa Grovery	Field trip for petrified wood Bring: shovel, rock hammer, small pick
June 15	Cascade Mineralogical Society Red Top	Field trip for Agate, jasper, and geode fragments

Date and Time	Host and Location	Details
June 29-30	Cascade Mineralogical Society Kent Commons	Rock, Gem, and Jewelry Show
July 20 11 am	Darrington Rock Club Sweetwater	Field trip for travertine Bring: rock hammer, 3-pound hammer, chisel, small pry bar
Aug. 10 – 11 10 am – 5 pm	<u>Maplewood Rock and Gem Club</u>	Show
Aug. 17 – 18 9 am	Puyallup Valley Green Water FR 70 at the washout	Field trip for jasper, opal Bring: shovel, small pick, rock hammer, 3-pound hammer
Aug. 24 9 am	Marysville Rock Club Lake Wenatchee State Park	Field trip for garnets Bring: small shovel, ¼" mesh screen box, tweezers
Sept. 7 – 8 8 am	All Rockhounds Pow Wow Red Top Teaway Campground	Field trip for agate, jasper, geodes Bring: shovel, small pick, rock hammer, 3-pound hammer, and chisel
Sept. 21 10 am	Opal Little Naches Hwy 410 & FR 91	Field trip for thundereggs, fossils, lilypad Bring: shovel, small pick, rock hammer, 3-pound hammer, and chisel
Oct. 19 9 am	Darrington Rock Club Index Hwy 2 and Index Rd	Field trip for picture jasper Bring: rock hammer, wading boots

Date and Time	Host and Location	Details
Nov. 16 9 am	Marysville Rock Club Blanchard Hill 15 and Alger Rd Gas and Go	Field trip for dalmation stone Bring: heavy hard rock tools, safety glasses
November	Maplewood Rock and Gem Club	Community Demonstration Show
December	Maplewood Rock and Gem Club	Holiday Gift Show

Discover Pass Free Days

Normally, you need a Discover pass to park at Washington state parks, Washington Departments of Fish and Wildlife land, and Natural Resources (DNR) land. But, on the following days, you don't need a pass.

Jan. 1 – First Day Hikes; New Years Day	June 9 – Free Fishing Day
Jan. 15 – Martin Luther King, Jr. Day	June 19 – Juneteenth
March 9 – Billy Frank Junior's Birthday	Sept. 28 – National Public Lands Day
March 19 – State Parks' 111 th Birthday	Oct. 10 – World Mental Health Day
April 22 – Earth Day	Nov. 11 – Veterans Day
June 8 – National Get Outdoors Day	Nov. 29 – Autumn Day

Washington State Mineral Council

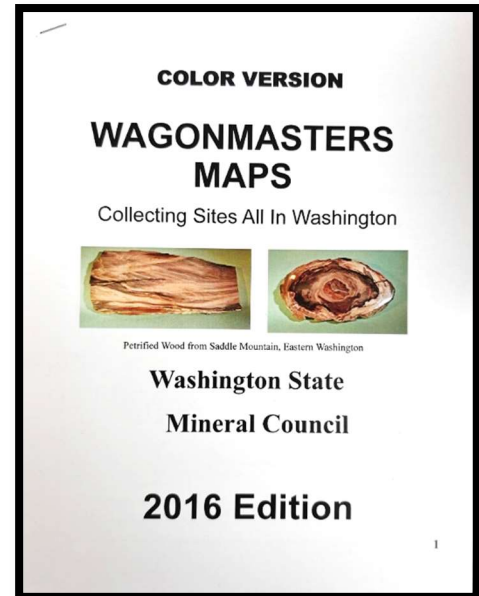
Our club, along with many other rock and gem clubs in the state, is a member of the Washington State Mineral Council. This organization helps us by

- advocating for access to public lands
- advocating for beneficial land use policies
- compiling and sharing maps and other information
- publicizing shows and field trips so members learn about and can participate in events at other clubs

Read their latest [Newsletter](#).

Maps for Rockhounds

The Washington State Mineral Council has put together a 62-page booklet with maps for finding rock hounding sites. You can buy a copy for only \$20 at the meeting.



Seattle Regional Gem and Mineral Shows Committee

Our club is a member of a Seattle area organization of rock clubs. Together we share wooden display cases that we use at our shows. These cases are stored in the new shed behind our building. The other member clubs are the North Seattle Lapidary Gem and Mineral Club and the West Seattle Rock Club.

Northwest Federation of Mineralogical Societies

Our club is a member of the Northwest Federation of Mineralogical Societies: <http://Northwestfederation.org>.

Sister Club in Australia

Our sister club in Australia is the Atherton-Tableland Mineral & Lapidary Club in Tolga, Queensland. Connect to them on Facebook:

www.facebook.com/groups/197340266987276

One hundred million years ago the eastern edge of the Australian continent extended much farther to the east. Tectonic forces broke off and submerged the eastern section into the ocean while a rising mantle caused the remaining land to lift.

Beginning 4 million years ago large basalt flows filled river valleys and formed a relatively flat landscape. Following that period the volcanoes became more gaseous spewing lava in violent eruptions. This landscape is now called the Atherton Tablelands. You can learn more on Wikipedia.



News to share?

Did you go rockhounding? Have you acquired a beautiful new specimen? Please send stories, images, or simply ideas for articles that Nancy would write to the newsletter editor, Nancy Samuels at MRGC@nancysamuels.com.

This issue

Maplewood Rock and Gem Club
News

Volume 4, Publication year: 73