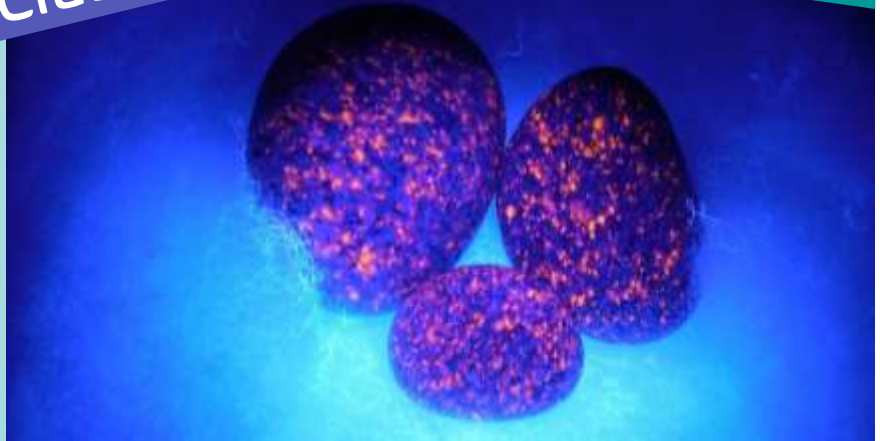


Maplewood Rock and Gem Club

May 23

In this issue

May meeting	1
Tulip City Gem and Mineral Club	1
Banner image	1
Paul Anderson	2
BC Show May 12 - 14	4
Classes in June	5
Sell at a show	5
Juniors — Show and Tell	6
Juniors are looking for a new leader	6
Overdue library books	6
Lapidary Shop	7
Field Trips	8
Rock shows	11
Classified Ads	13
Spread some sunshine	13
Washington State Mineral Council	13
Rock candy	14
Connect with us	15
Our Board	15
Image license attributions	15
Sister Club in Australia	16
News to share?	16



May meeting

Monday, May 15th at 7 pm

We are returning to our tradition of sharing food at the meeting. If your last name begins with a letter from N to Z, please bring something to share. We will also have a raffle with many prizes and a silent auction.

Tulip City Gem and Mineral Club

Last month we shipped a box of local rocks to the [Tulip City Gem and Mineral Club](#) in Michigan, and soon afterwards they sent us a box of their local favorites. They had invited us to participate in this rock exchange. At the May member meeting we will open the box and see what we have received.

Banner image

This photo shows Yooperlite, fluorescent sodalite, glowing under UV light. Under natural sunlight, these beauties are slightly speckled dull gray rocks. The image is published here under the Creative Commons license [BY-SA 4.0](#).

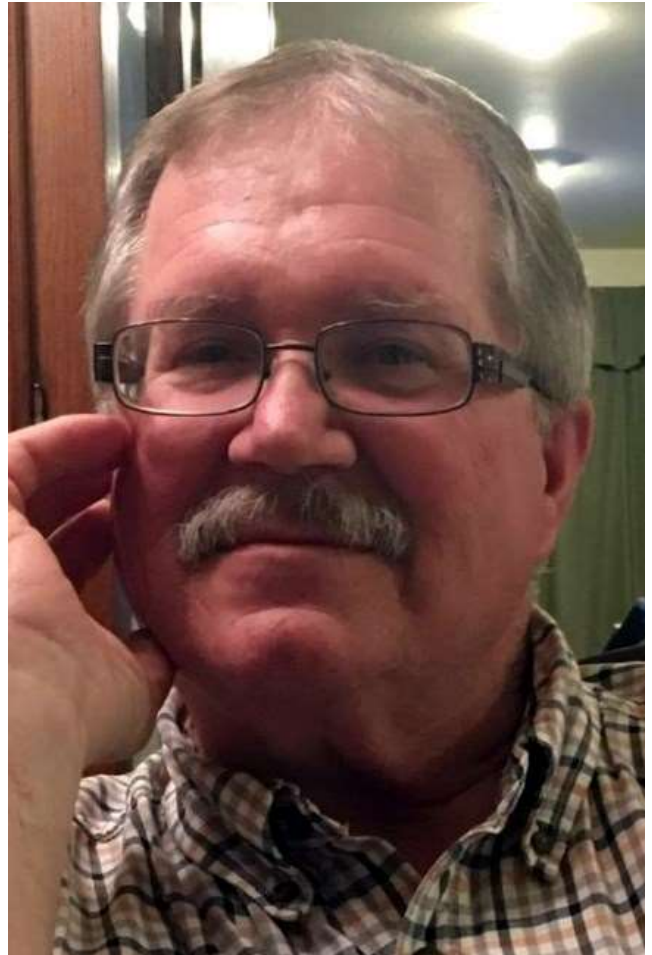
Paul Anderson

The Board has heavy hearts, because our club has lost a longtime member and friend. Paul Anderson passed away on April 27th, and we are missing him.

At Maplewood Rock Club Paul was a pillar who helped us tremendously over the years. He was a person who would notice things that needed to be done, and he'd take the initiative to get them done.

He represented our club at the Washington State Mineral Council, and he took care of our building and grounds for many years, and we deeply appreciated him for all the hours and energy he spent. He was knowledgeable about rocks and minerals and was happy to answer questions and share advice.

Paul had a kind and generous heart; we will miss him.



Services

Visitation: Thursday, May 11 from noon to 7 pm

Graveside service: Friday, May 12 at 2:00 pm

Location for both:

Evergreen-Washelli Memorial Park

11111 Aurora Ave N

Seattle, Washington 98133

Paul Anderson was very passionate and dedicated to Maplewood Rock and Gem Club. He was always busy in helping the club in some way or another. He was always ready to share his love of rocks and his passion for finding hidden gems.

His dedication for the club was evident until his last breath which he spent voluntarily helping the club without anyone asking him to do it. We will miss Paul's passion, presence, and dedication.

Ali Rizvi

Share your memories

If you would like to share your memories of Paul with the family, you may post them on his memorial page: [Paul Anderson Obituary - Seattle, WA \(dignitymemorial.com\)](https://dignitymemorial.com/obituaries/seattle-wa/paul-anderson-20230505)

Obituary

The Edmonds News wrote an obituary that you might want to read: "Paul Anderson: Longtime Edmonds resident took pride in his community involvement"

<https://myedmondsnews.com/2023/05/paul-anderson-longtime-edmonds-resident-took-pride-in-his-community-involvement/>



BC Show May 12 - 14

On May 12 – 14 there will be a show just over the border in British Columbia. It looks like a fun weekend.

BC Lapidary Society
Proudly Presents:

THE BC ROCK & GEM SHOW

May 12-14, 2023

QUIRKY QUARTZ

And Rock Lovers Roundup Tailgate Sale
Saturday Only - May 13th, 10am-5pm
Admission included in the price of the Gem Show

Door Prizes, Dealers, Demonstrators, Club Exhibits,
Displays, Spin and Win, Grab Bags, Gold Panning,
Fun for the whole family!

WHEN	NEW LOCATION	ADMISSION
MAY 12-14, 2023	Chillwack Heritage Park	Adults: \$6.00
Friday: 10am-8pm	44140 Luckakuck Way	3 Day Pass- \$12.00
Saturday: 10am-6pm	Chillwack, BC	Students (6-17): \$2.00
Sunday: 10am-5pm	Exit 116 (Lickman Rd) off Hwy 1	Children under 6: Free (accompanied by an adult)

visit bclapidary.com

Classes in June

Wire wrapping

A wire-wrapping class taught by Char Jorgenson is scheduled for June 10 from 10 am until 4 or 5 pm. Please sign up at the May meeting. We need at least 6 participants and no more than 12. The cost is \$40 and all materials are supplied.

First aid and CPR

On Saturday, June 17 (starting time to be announced later) the South Snohomish County Fire Department will teach a free 1-hour class: "ACT to Save a Life: Antidote, CPR and Tourniquet." This class teaches three life-saving skills that you might use in an emergency:

- **Antidote** (Narcan) for suspected opiate overdoses
- **CPR** and **AED** training for cardiac arrest
- **Tourniquet** for severe bleeding control

Sell at a show

The Southern Washington Mineralogical Society is hosting "Rock & Gem Show 2023" on September 8 – 10th in Longview, WA. They are currently looking for vendors, especially for people selling beads and equipment. But they are accepting applications from vendors of all types of rock and mineral related products. To apply, go to their [Facebook page](#).



2023 SWMS Rock & Gem Show

Southern Washington Mineralogical Society

WHERE	WHEN
Cowlitz County Fairgrounds Event Center 1900 7th Ave Longview, WA 98632	September 8th 11:00am - 5:00pm September 9th 9:00am - 5:00pm September 10th 9:00am - 4:00pm
DEALER CHAIR	SHOW CHAIR
Vicki Johnson vickijrocks@msn.com (360) 751-8031	Crystal Teel swmineralogicalsociety@gmail.com (360) 355-6424
SHOW ITEMS	COST – 3 DAYS
10ft x 10ft Dealer Space each	\$150.00
8ft Table each	\$12.00
Chairs each	\$1.00
Electrical Outlet each	\$45.00
Camping Site (per night)*	\$16.32
TO APPLY	
<ul style="list-style-type: none"> • Scan QR code and apply online • Contact Show Chair for additional application options 	

Juniors – Show and Tell

Have you brought something from your rock collection for Show and Tell? Every meeting we have a time for our members to share something. What might you share at the next meeting? Do you have a specimen that is especially interesting or gorgeous? Is there a bear, heart, sphere, arrowhead, or something else carved or shaped out of rock in your collection? Would you like to ask the members whether they can tell you more about one of your rocks? Please look through your collection and choose something to share at the meeting this month.



Juniors are looking for a new leader

Holly White has decided to step down from leading the Juniors. While she was leading the group, Holly set in place a great program for the next volunteer to take over. The new leader might start with her program and build upon it as they feel guided by their own passions and interests.

Can you imagine yourself helping kids develop their love of rocks, minerals, and the natural world? Please contact Holly or a Board member to learn more about this rewarding role at our club.

Overdue library books

The Library has recently taken an inventory of the books, and found that many books were checked out months or even years ago and not yet returned. If you have borrowed a book in the past, please check your bookshelves to see if you still have one of our library books. Please return the overdue books you find – don't worry, there aren't any fines. But, we will give you a smile and a "Thanks!" if you find a book and bring it back.



Lapidary Shop

Our lapidary shop is reserved for members who have paid their dues. Inside are five slab saws, three CabKing™ machines for polishing cabochons, and two trim saws.

Sign up for shop time

All shop users must sign up for a time slot at least a day before the session. On their first visit, new shop users will be trained on shop procedures and safety before being able to use any equipment.

You can [sign up for shop time online](#). The system will send you a confirmation email which you should save until after your session. You will need the email if you want to cancel your reservation. Each Thursday we have shop sessions available:

- Session 1: 3:00 to 5:30 pm
- Session 2: 5:30 to 8:00 pm (except on the first Thursday of each month)

How to cancel

If you sign up for shop time online and later realize you won't be able to make it to the session, you need to cancel your reservation no later than the day before the session. This enables someone else to sign up. If you do not cancel, you will be charged for the session. To cancel, click the link in the confirmation email you received after you signed up.

What to bring

You need to bring \$7 (cash or check) to pay for the session. Additionally, you might like to bring these:

- Face mask to not breathe rock dust or for Covid protection
- Hearing protectors

Before you leave the shop

The shop stewards are volunteers who generously give 6 hours a week to enable us to use the tools. Before you leave a tool station, please wipe it down and leave it in the same condition as you found it. If you discover a problem with a saw or tool, please let the Shop Steward know.

Shop Stewards

Rich Osborne
Bruce Samuels
Ashley Martin

Email:
Shop@maplewoodrockclub.com



Field Trips

Here are the field trips in our area as published on the [Mineral Council website](#). Click *Field Trips* in the left column for up to date details on that website. The field trips led by Pow Wow require the participants to pay annual dues of \$7.50. The trips that don't have specific dates, are tentative.

Date and Time	Host and Location	Details
Late May	Verlot Ranger Station	Rainbow chert
June	Saddle Mt.	Petrified wood and Diatom opal
July 22 at 11 am July 22 & 23 from 10 am to 5 pm	Darrington Rock Show and Sauk River Bars	Travertine
Aug. 19 & 20 at 9 am	Greenwater Enumclaw Ranger Station Tony Johnson (253) 863-9238	
Sept. 9 & 10 8 am	Pow Wow Teanaway Community Camp	Agate, jasper & maybe jade Annual dues required
Sept. 16 at 10 am	Hwy 410 and Forest Road 19 Tony Johnson (253) 863-9238	Thunder eggs, fossils, and lily pad jasper.
October ? at 9 am	Money Creek Campground	Picture jasper
Nov ? at 9 am	Blanchard Hill Northbound I-5 take Alger Exit. Meet at Gas & Go	Dalmation Stone & Green Chert

EVERETT ROCK & GEM CLUB
68th Annual
**GEM, JEWELRY
& MINERAL SHOW**
SATURDAY & SUNDAY • MAY 27 & 28, 2023
SAT 10-6 • SUN 10-5

Evergreen State Fairgrounds
USE EAST ENTRANCE
& WATCH FOR SIGNS
18359 Cascade View Drive
Near Monroe, Washington, 98272

CRYSTALS & GEODES
DISPLAYS & EXHIBITS
TOOLS & EQUIPMENT
KIDS' ACTIVITIES
DEMONSTRATIONS
JEWELRY MAKING



FOSSILS
BOOKS & MAPS
SILENT AUCTION
CLUB SALES TABLE
HOURLY DOOR PRIZES
GEM & JEWELRY DEALERS

FREE ADMISSION
Free Parking  Disabled Access  Snack Bar
everettrockclub.com 

Happy Birthday to everyone born in May!

**Your birthstones are
Emerald and Agate**



The oldest emeralds
are about 2.97 billion
years old.

Inclusions are not undesirable for many people. A
richly colored emerald with many inclusions is
generally more valuable than a pale gem with few
flaws. The inclusions are called the jardin (garden).

More than half of
emeralds come from
Columbia.

Rock shows

Date and Time	Host and Location	Details
May 13, 10 am – 5 pm May 14, 10 am – 4 pm	Hatrockhounds Gem & Mineral Society Eastern Oregon Trade & Event Center 1705 East Airport Road Hermiston, OR	\$3 12 and under are free!
May 19, 10 am – 5 pm May 20, 10 am – 5 pm May 21, 10 am – 3 pm	Mt. Hood Rock Club Kliever Memorial Armory 10000 NE 33 rd Dr. Portland OR	
May 27, 10 am – 6 pm May 28, 10 am – 5 pm	Everett Rock and Gem Club Evergreen State Fairgrounds 18359 Cascade View Drive Monroe, WA	
June 16, 10 am – 5 pm June 17, 10 am – 5 pm June 18, 10 am – 4 pm	Lower Upmqua Gem & Lapidary Society Reedsport Community Building 451 Winchester Ave. Reedsport, OR	
Aug. 3, 10 am – 5 pm Aug. 4, 10 am – 5 pm Aug. 5, 10 am – 5 pm Aug. 6, 10 am – 4 pm	Billings Gem and Mineral Club Billings Hotel & Convention Center 1223 Mullowney Lane Billings, MT	\$5/day or \$15 4-day pass Kids under 12 are free with an adult!
August 12, 10 am – 5 pm August 13, 10 am – 5 pm	Maplewood Rock and Gem Club 8802 196th St SW Edmonds, Washington	Free

Date and Time	Host and Location	Details
Aug. 18, 9 am – 5 pm Aug. 19, 9 am – 5 pm Aug. 20, 10 am – 4 pm	Willamette Agate & Mineral Society Polk County Fairgrounds 520 S. Pacific Hwy. Rickreall, OR	
Sep. 8, 11 am – 5 pm Sep. 9, 9 am – 5 pm Sep. 10, 9 am – 4 pm	Southern Washington Mineralogical Society Cowlitz County Fairgrounds Event Center 1900 7th Ave Longview, WA 98632	
Sep. 9, 9 am – 5 pm Sep. 10, 10 am – 4 pm	Clallam County Gem and Mineral Association Vern Burton Community Center 308 East 4 th St. Port Angeles, WA	
Oct. 6, 10 am – 6 pm Oct. 7, 10 am – 6 pm Oct. 8, 10 am – 5 pm	Portland Regional Rock and Gem Club Wingspan Event Center 801 NE 34 th Ave Hillsboro, OR	\$7 Kids under 12 are free with an adult!
Oct. 7, 10 am – 5 pm Oct. 8, 10 am – 5 pm	Marysville Rock and Gem Club Evergreen State Fairgrounds Display Bldg. #500 14405 179 th Ave SE Monroe, WA	

Classified Ads

Our website now has a Classifieds page for members to post items for sale, items they want to buy, and helpful tips and information. If you would like to share a link to a favorite rock shop or post a notice about a tumbler you are selling, check out the [Classifieds page](#) on the website.



Spread some sunshine

Nancy Ross leads our Sunshine committee. If you are aware of a member who might be cheered by a get-well card, please contact her, and she will write and send a card.

Washington State Mineral Council

Our club, along with many other rock and gem clubs in the state, is a member of the Washington State Mineral Council. This organization helps us by

- advocating for access to public lands
- advocating for beneficial land use policies
- compiling and sharing maps and other information
- publicizing shows and field trips so members learn about and can participate in events at other clubs

Read their latest [Newsletter](#).

Rock candy

Here is some rock candy for you to enjoy.



Bloodstone



Rhodochrosite pendant

Grit for sale

The Shop Stewards sell grit on Thursdays when the shop is open. Please let them know a day ahead that you will stop by to purchase grit.

To contact the Shop Stewards, email shop@maplewoodrockclub.com

Each grit package is \$4, and this is what they sell:

- 1 lb of 60/90
- 1 lb of 120/220
- $\frac{3}{4}$ lb of pre-polish
- $\frac{1}{2}$ lb of polish

Connect with us

Website: <http://www.maplewoodrockclub.com/>

Facebook page: Maplewood Rock & Gem Club

Facebook group for members: MRGC Sales and Trades

Email us: info@maplewoodrockclub.com



Address: 8802 196th St SW, Edmonds, Washington 98026

Our Board

Our club is run entirely by volunteers; and we are grateful for the time, energy, and expertise they give to our community.

President: Ali Rizvi

Secretary: Carla James

Treasurer: Bruce Samuels

Members at large: Nancy Ross, Rich Osborne, Nancy Samuels, and Michele McGraw



Image license attributions

We use abbreviations in the license attributions. Here are the definitions.

CC: Creative Commons license

BY: attribute the author, link to the license, and indicate if changes were made.

SA: share alike - If you publish the image, you must use the same license.

ND: no derivatives - You may not alter the image.

NC: non-commercial use - You may not use the image for commercial use.

3.0 or other number: version of the license

Sister Club in Australia

Our sister club in Australia is the Atherton-Tableland Mineral & Lapidary Club in Tolga, Queensland. Connect to them on Facebook:

www.facebook.com/groups/197340266987276

One hundred million years ago the eastern edge of the Australian continent extended much farther to the east. Tectonic forces broke off and submerged the eastern section into the ocean while a rising mantle caused the remaining land to lift.

Beginning 4 million years ago large basalt flows filled river valleys and formed a relatively flat landscape. Following that period the volcanoes became more gaseous spewing lava in violent eruptions. This landscape is now called the Atherton Tablelands. You can learn more on Wikipedia.



News to share?

Did you go rockhounding? Have you acquired a beautiful new specimen? Please send stories, images, or simply ideas for articles that Nancy would write to the newsletter editor, Nancy Samuels at MRGC@nancysamuels.com.

This issue

Maplewood Rock and Gem Club
News

Volume 5, Publication year: 72