

MAPLEWOOD ROCK AND GEM CLUB

2020
NOVEMBER



Inside this issue

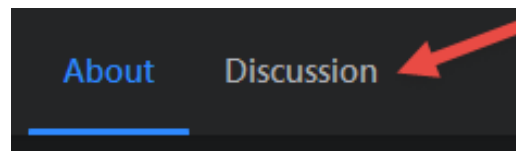
A gift from the Board	4
Awesome auction	2
Board meeting	8
Connect with us	8
Dalmation stone and chert	1
Facebook	4
General meeting: Nov 16	1
Giving back, if you can	4
Juniors - A Rainbow of Quartz	3
Juniors - puzzle answer	7
November Birthstones - Topaz and Citrine	5
Silent auction	1
Sister club in Australia	9

General meeting: November 16

We hope you will join us at our November meeting which will be Monday, November 16 at 7 pm on Zoom. Members will receive a Zoom link in an email. If you have never used Zoom, you might find [this video introduction](#) helpful. Do you have questions about the meeting? Contact our Board President, Sandra: ask.sandra@yahoo.com

Silent auction

The silent auction will end on November 16 at 10 pm. To participate, go to our [Facebook page](#) and click on the event, "MRGC silent auction October 21 - November 16". On the event page just below the title you will see a small menu like the one here. Click Discussion. To bid on an item comment with a dollar amount.



Dalmation stone and chert

Ed Lehman is leading the last field trip of 2020 on November 21, and they will be searching for Dalmation stone and chert. On [page 6](#) you will find a little more about this trip and contact information for Ed.

Awesome auction

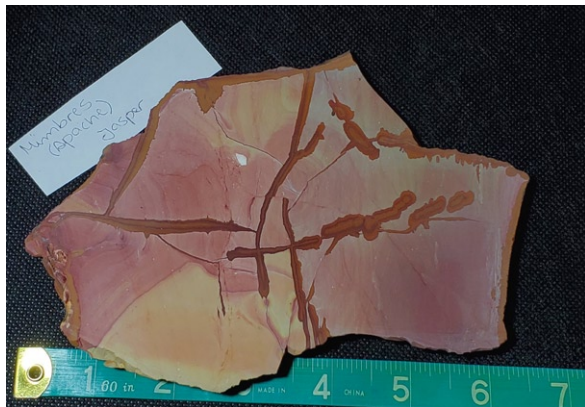
Have you been to the silent auction on our [Facebook page](#)? It ends on Monday, November 16 at 10 pm, and there are many amazing specimens ready for display or for making beautiful artistic pieces. Here are some of the gorgeous rocks and minerals you can bid on.



Tiger Eye



Fluorite



Mimbres (or Apache) Jasper



Prehnite



Mordenite with Stilbite

Juniors - A Rainbow of Quartz

You probably know the six colors of the rainbow. In the photo of the stone path below, you can see the rainbow colors blending from one to the next: red, orange, yellow, green, blue, and violet.



A rainbow of light shining on a stone path.

Did you know that quartz comes in all colors of the rainbow? Some of the colors have names, like *prasiolite quartz* for the green variety. Can you match the pictures below with the names on the left?

Rose quartz

Orange Citrine

Citrine

Prasiolite quartz

Blue quartz

Amethyst



by [John Rusk](#)

by [Géry Parent](#)



by [Mauro Cateb](#)



A gift from the Board

The due date for membership fees is coming up and the board decided to do membership a little different this year.

Since Covid 19 took pretty much all our club activities away from us, we are not going to charge current members membership dues for 2021.

The dues you paid for this year are going to be carried over.

Giving back, if you can

In lieu of membership dues and if you wish to and can, please consider making a donation in the amount of your membership fee to help our club pay bills such as building upkeep.

Since the silent auctions and grit sales are our only sources of income right now, donations are greatly appreciated. Checks can be sent to the club and be made out to "MRGC". The club address is

8802 196th Street SW
Edmonds, WA 98026

Bidding on items in the silent auction is a way to give back to the club with a win-win outcome. You get a gorgeous specimen of rock or mineral and the club has a little more money for paying bills. All the items available in the silent auction were donated, so even before you bid, people have already generously supported our club.

When bidding, remember that this is a fundraiser where you might get a huge bargain or you might pay a fair price. Don't be afraid to bid up on something you like. The previous bidder, might respond in kind to your bid.

Facebook

Our [facebook page](#) has up to date information about what is happening at our club. When we have online auctions, they happen on our page.

We also have a Facebook group — [MRGC Sales and Trades](#) — which is open to members of our club.



November Birthstones – Topaz and Citrine

Happy birthday to everyone with a November birthday! Your two birthstones are topaz and citrine. In their natural states, both of your birthstones are usually yellow to golden brown which causes people to mistake one for the other.



Blue Topaz

Topaz basics

Category: nesosilicate (SiO₄) minerals

Formula: Al₂SiO₄(F,OH)₂

Crystal system: Orthorhombic

Crystal class: Dipyramidal

Mohs: 8

Cleavage: perfect

Fracture: Subconchoidal to uneven

Luster: vitreous

Streak: white

Color: colorless without impurities or white, blue, brown, orange, gray, yellow, yellowish brown, green, pink and reddish pink, red

Diaphaneity: transparent

Pleochroism: weak

Color array

Topaz is available in a wide variety of colors. Imperial topaz is yellow, pink, or pink-orange. Orange topaz — also called Precious topaz — is the color of the November birthstone and serves as a symbol of friendship. Utah's state gemstone is the orange topaz.



Citrine

Treatments

Brown and pale topaz gems are often heat treated to transform the colors into bright yellow, gold, pink, or violet.

Blue topaz is rarely found. However, colorless, gray, pale yellow, or pale blue topaz can be heat treated or irradiated to create an intense blue.



Mystic Topaz
by [Mark Somma](#)

Mystic topaz begins as a colorless gem. They place the gem in a vacuum chamber and coat it with several chemical vapors to coat the gem in a thin film. The resulting gem reflects rainbow colors. Although topaz is quite hard, the film of colors is thin and can be

scratched or worn away, so gentle care is required in cleaning these gorgeous gemstones.

Dalmation stone and chert – field trip

On November 21 Ed Lehman of the Darrington Rock Club is leading the final field trip of 2020. They will be searching for chert and dalmatian stone.

If you would to join Ed, please contact him about a week before the trip to let him know. You might want to contact Ed to ask about

- New or updated details about the scheduled trip
- Whether you will need a Discover Pass, Trailhead Pass, or Forest Pass
- Fees
- Maps and directions



Dalmation Stone
by Sue Corbisez
license: Creative Commons 3.0

Trip details:

- meet at 9 am at the Gas Mart, I-5 exit 240
- bring tools for hard rock

Ed's contact information:

Ed Lehman wsmced@hotmail.com
home: 425-334-6282
cell: 425-760-2786

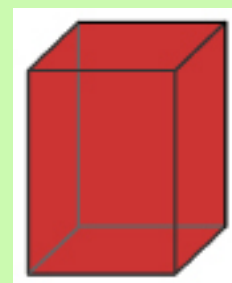
Arrive at the meeting place at 8:30 am and bring

- Mask to protect from COVID-19 transmission
- Food and drinks for the day
- Appropriate clothing for any possible weather
- Cash if there are fees
- Tools
- Map and directions
- First aid kit

Word of the Month

orthogonal

A crystal is orthogonal when the three dimensions (height, width, and depth) are at 90° to one another.



Juniors - puzzle answer



Board meeting

Until it is safe for the Board to meet again, their meetings are on Zoom. If you have questions for the board or if you'd like to attend a meeting, please email our Board President, Sandra: ask.sandra@yahoo.com



Washington State Mineral Council

Our club, along with many other rock and gem clubs in the state, is a member of the [Washington State Mineral Council](#).

This organization helps us by

- advocating for access to public lands
- advocating for beneficial land use policies
- compiling and sharing maps and other information
- publicizing shows and field trips so members learn about and can participate in events at other clubs



Connect with us

Website: <http://www.maplewoodrockclub.com/>

Facebook page: [Maplewood Rock & Gem Club](#)

Facebook group for members: [MRGC Sales and Trades](#)

Address:
8802 196th St SW, Edmonds, Washington 98026

Sister club in Australia

Our sister club in Australia is the Atherton-Tableland Mineral & Lapidary Club in Tolga, Queensland. Connect to them on Facebook:

www.facebook.com/groups/197340266987276

One hundred million years ago the eastern edge of the Australian continent extended much farther to the east. Tectonic forces broke off and submerged into the ocean the eastern section while a rising mantle caused the remaining land to lift.

Beginning 4 million years ago large basalt flows filled river valleys and formed a relatively flat landscape. Following that period the volcanoes became more gaseous spewing lava in violent eruptions. This landscape is now called the Atherton Tablelands. You can learn more on Wikipedia.



This issue

Maplewood Rock and Gem
Club News

Volume 11

Publication Year: 69

News to share? A suggestion? A correction?

Please send news ideas and images you'd like to share to the newsletter editor, Nancy Samuels at mrgc@nancysamuels.com.