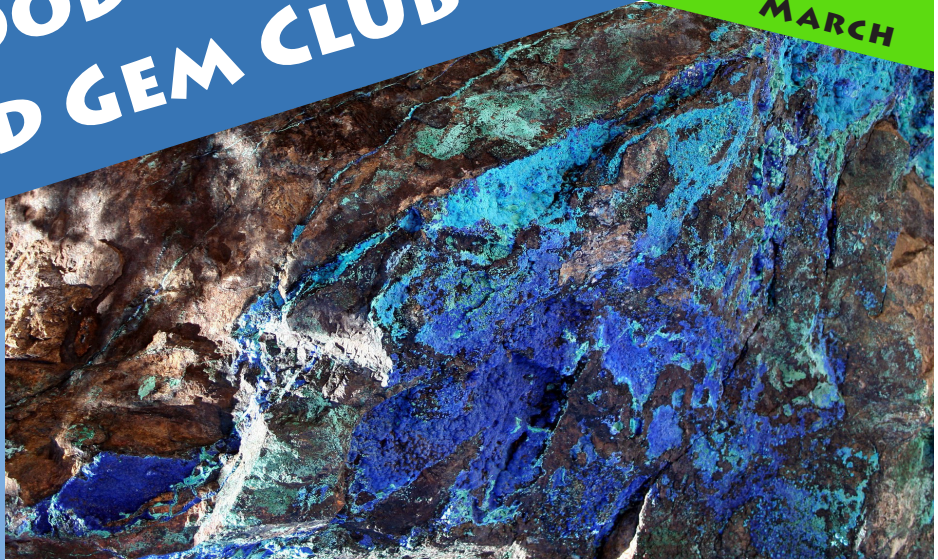


MAPLEWOOD ROCK AND GEM CLUB

2020
MARCH



Inside this issue

April Board meeting	2
April Shows Near and Far	9
Birthstone - bloodstone	6
Calendar	3
Connect with us	2
Field trips	12
Garage Sale	1
General meeting	1
Jade field trip	7
Juniors	6
Lapidary shop	10
Looking for a party venue?	5
March Shows Near and Far	8
Rock of the Month and Show and Tell	1
Show and tell	11
Silent auction	10
Sister club in Australia	15
Spring Sale - April 4 - 5	4
Suggestions for future articles	2
Too many rocks at home?	5

General meeting

March 16 at 7 pm

If your name begins with a letter from A to M, please bring a sweet or savory snack to share.

Rock of the Month and Show and Tell

The Rock of the Month and the Show and Tell presentations are cancelled this month, because we will be having a Garage Sale.

Garage Sale

If you signed up for table space, bring your wares, if not, bring a little money. We are having a garage sale. People will be selling rocks, household items, and more. What is no longer needed at one home might be a treasured addition to someone else's home. What will you be hoping to find?



Connect with us

Visit our web site: <http://www.maplewoodrockclub.com/>

Connect with us on Facebook: <https://www.facebook.com/MaplewoodRCG>

Come to a meeting :

8802 196th St SW
Edmonds, Washington 98026



April Board meeting

All club members are welcome at the board meetings. Join our Board at their next meeting on April 2 at 7 pm.



Suggestions for future articles

Is there a topic you would like the newsletter to cover? For instance, would you like to see an introduction to crystal shapes? Do you have a favorite rock hounding term that we could use as the Word of the Month? Nancy, the news editor enjoys learning about rocks and minerals, and she would have fun digging just a bit into a topic to provide a brief write-up.

Calendar

Date	Event
March 16 at 7 pm	Meeting Garage Sale No Rock of the Month or Show and Tell presentations
Apr. 4 – 5	5th Annual Spring Sale
Apr. 20 at 7 pm	Meeting Rock of the Month – “Cornwall England Mines” by Laura Hayes
May 18 at 7 pm	Meeting Rock of the Month presentation: open
June 15 at 7 pm	Meeting Rock of the Month presentation: open
July 20 at 7 pm	Meeting Rock of the Month presentation: open
Aug. 8 - 9	14th Annual Rock and Mineral Sale
Aug. 17 at 6:30 pm	Meeting: BBQ Potluck and Meet and Greet
Sept. 21 at 7 pm	Meeting Rock of the Month presentation: open
Oct. 19 at 7 pm	Meeting Rock of the Month presentation: open
Nov. 14 – 15	Annual Fall Show
Nov. 16 at 7 pm	Meeting: Rock of the Month presentation: open
Dec. 5 – 6	Annual Winter Bazaar
Dec. 14 at 6:30	Meeting: Holiday Party

Rock Shows

Check out the [January news](#) for a long list of rock and gem shows around our region in 2020.

Spring Sale - April 4 - 5

Now is the time to mark your calendar for coming to the Spring Sale. There will be a variety of gorgeous items — rocks in their raw form as nature created them, rocks gorgeously polished, and rocks crafted into something useful and beautiful, like jewelry.



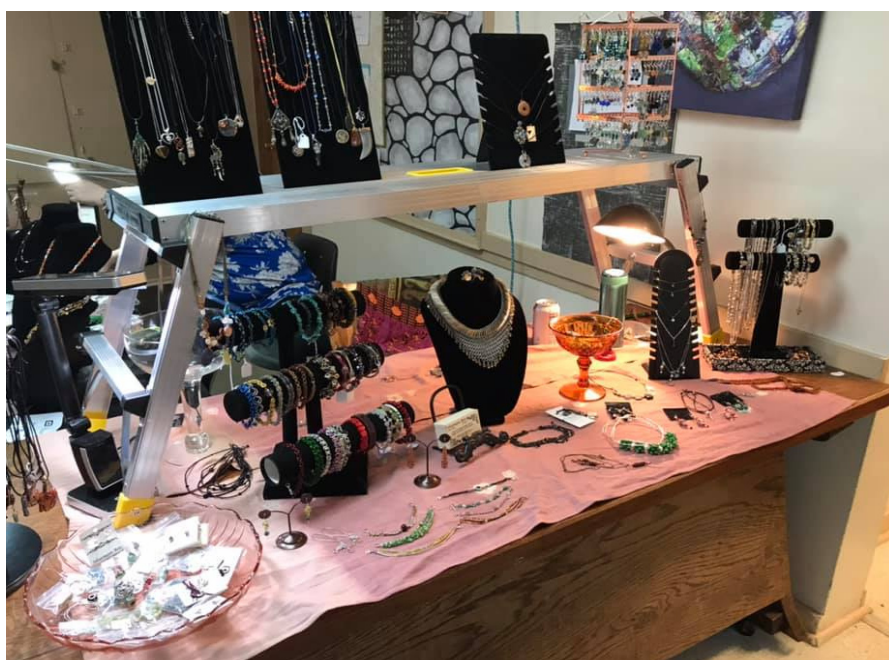
Spring Sale

Saturday, April 4
9 am - 5 pm

Sunday, April 5
10 am - 5 pm

At the clubhouse:

8802 196th Street SW
Edmonds, WA 98026





Looking for a party venue?

The Maplewood Clubhouse is a great venue for gatherings. If you are planning a family reunion or a party that would overflow your home, consider renting the Clubhouse for a day. Members get 50% off the daily rate of \$350. For more information or to schedule a date, contact Mary Ann Collins at 650-383-7625.

Too many rocks at home?

Please donate rocks for our monthly Raffle and Silent Auction.

The Club's raffle, silent auction and prize programs are very popular with club members and are a major source of revenue. When the prizes are interesting, beautiful, and desired, we sell more tickets. We encourage all members to consider donating rocks that we can raffle or auction off at our monthly meetings and at club Shows in April, August and November.



Tell us about your latest rock hounding adventure

Have you been out collecting rocks? Have you been to a great mineral museum or gem exhibit? Your friends in the Maplewood Rock and Gem Club would love to see your photos and hear about your experiences.

Please email Nancy, the news editor (mrhc@nancysamuels.com) to share your story.

Birthstone - bloodstone

Happy Birthday, to those born in March!

One of your birthstones is Bloodstone, which is the aggregate heliotrope.

Heliotrope, the Stone of Babylon, has been valued over the millennia for its believed magical properties. Pliny the Elder (1st Century) reported that magicians use it as a stone of invisibility. Damigeron (4th Century) referred to its virtuous power to preserve health and youth. The Gnostics wore it as an amulet for prosperity, courage, health, longevity, and to alleviate melancholy. Ancient Greeks and Romans wore it to garner fame and good luck, as well as to protect themselves from venomous bites.



We have yet to find evidence that bloodstone will make you famous, invisible, healthy, wealthy, or otherwise. But, modern science does back up the belief held by the people of India. They believed that by dipping a bloodstone in cold water and holding it on a cut, the stone would staunch the bleeding. Because iron oxide in the stone is an astringent, this belief has merit. Before you try this at home, please sanitize your bloodstone.

This mineral is a cryptocrystalline mixture of quartz, most often a mix of opaque green jasper with red inclusions of hematite.



Juniors

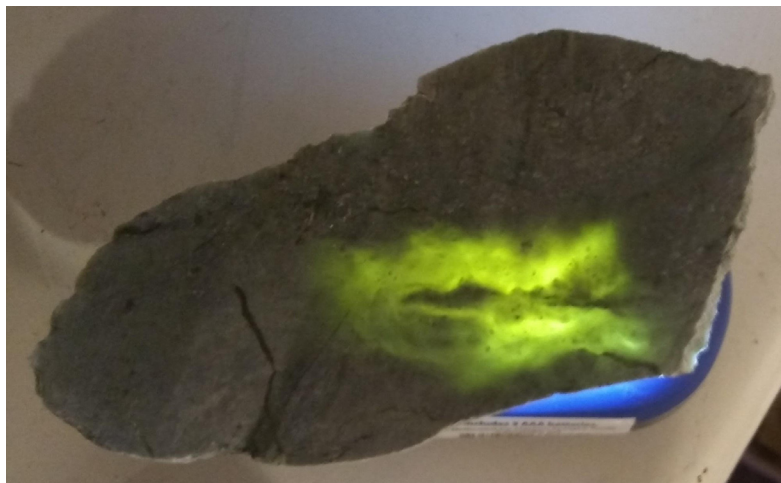
The Juniors meeting starts at 6:30, before the general meeting. Guests are free and always welcome. They do not need to come with or even know a member.

If you know any kids between 5 and 12, who are interested in rocks, encourage them to come. Encourage them even if they are not interested, because who can resist rocks once they know what they are all about.

Jade field trip

Hunter Byron led a field trip for collecting Washington jade in January.

Mary Garvey reported that they found a lot of jade. The trip also included a visit to sites where they found magnetite and quartz.



They walked about a mile in to the collection site and found the water level to be very high.



Hunter, Mary, and her niece, Annie were the only people from the Maplewood Rock and Gem Club.



March Shows Near and Far

The Bellingham show makes a nice day trip, and the other shows could be the highlight of a short get-away trip beyond the Cascades. More shows are listed in the [January newsletter](#).

March 14 - 15 in Filer, ID

Open: Saturday 10am - 5pm, Sunday 10am - 4pm

"70th Annual Show" by [Magic Valley Gem Club](#)

Twin Falls County Fairgrounds: 215 Fair Ave. (East of Filer on US Hwy. 30)

March 14 - 15 in Kalispell, MT

Open: Saturday 9am - 6pm, Sunday 10am - 5pm

"Gold, Gem, and Mineral Show" by Northwest Montana Rock Chucks

Flathead County Fairgrounds, Expo Building (next to grandstands): 265 North Meridian Road

March 21 - 22 in Missoula, MT

Open: Saturday 9am - 6pm, Sunday 10am - 5pm

"26th Annual Missoula Gem & Mineral Show" by Hellgate Mineral Society

Hilton Garden Inn: 2730 North Reserve St.

March 27, 28, 29 in Spokane

Open: Friday, Saturday 10am - 6pm, Sunday 10am - 4pm

"61st Annual Gem, Jewelry and Mineral Show" by Rock Rollers Club of Spokane

Adults \$6, Scout in uniform and children under 12 free

Spokane County Fair & Expo Center: N. 604 Havana

March 28 - 29 in Bellingham

Open: Saturday 10am - 6pm, Sunday 10am - 5pm

"59th Annual Rock and Gem Show" by Mt. Baker Rock & Gem Club

Bloedel-Donovan Park: 2214 Electric Ave.

March 28 - 29 in Pocatello, ID

Open: Saturday, Sunday, 10am - 5pm

"64th Annual Rock and Gem Show" by SE Idaho Gems & Mineral Society (SEIGMS)

\$2 for age 13 to adult and free for up to 12 with an adult

Bannock County Fairgrounds: 10588 Fairground Dr.

April Shows Near and Far

April 4 - 5 in Springfield, OR

Open: Saturday 9am - 5pm, Sunday 10am - 3pm
 "63rd Annual Rock and Mineral Show" by Springfield Thunderegg Rock Club
 Willamalane Adult Activity Center: 215 W C Street

April 18 - 19 in Kennewick

Open: Saturday 10am - 5pm, Sunday 10am - 4pm
 "Annual Rock & Mineral Show" by Lakeside Gem & Mineral Club
 \$5 adults, 12 & under free
 Benton Franklin County Fairgrounds: 1500 S. Oak

April 18 - 19 in Idaho Falls, ID

Open: Saturday 10am - 6pm, Sunday 10am - 5pm
 "56th Annual Show" by Idaho Falls Gem & Mineral Society
 Idaho Falls Recreation Center: B Street

April 24, 25, 26 in Yakima

Open: Friday, Saturday 10am - 6pm, Sunday 10am - 4pm
 "59th Annual Show" by Yakima Rock & Mineral Club
 Adults \$6, Students \$2.00, 12 & under free
 Central Washington State Fair Ground, Modern Living Building: 1301 South Fair Avenue

April 25 - 26 in Seattle

Open: Saturday, Sunday, 10am - 5pm
 "53rd Annual Rock Show" by West Seattle Rock Club
 Alki Masonic Temple: 4736 40th Ave. SW.

April 25 - 26 in Elma

Open: Saturday 10am - 5pm, Sunday 10am - 4pm
 "52nd Annual Earth Treasures Rock Show" by Grays Harbor Geology and Gem Society
 Grays Harbor Fair Grounds: 43 Elma-McCleary Road



Lapidary shop

On Thursday afternoons members can drop in to the Lapidary Shop to make cabochons and to cut and polish stone. There are two sessions, one from 3 – 5:30 pm and another from 5:30 to 8 pm, and each session costs \$5. On the first Thursday of each month, the second session is cancelled so people can attend the Board meeting.

At the Lapidary shop safety is taken seriously. Only club members may use the shop, and your first visit will begin with a mandatory detailed safety training lesson.

Silent auction

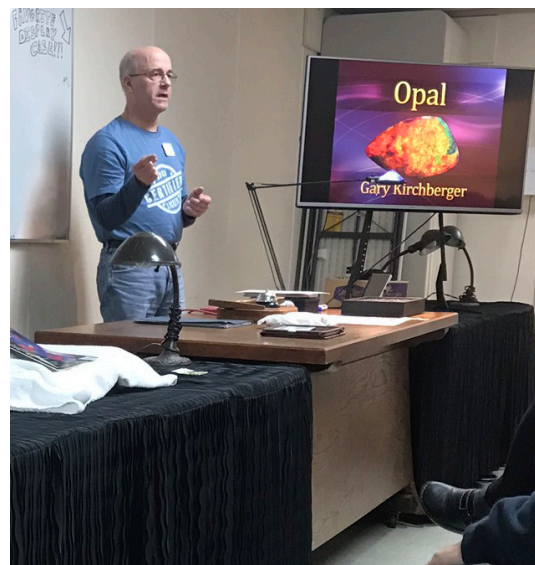
Mandy and Sandra Newby always have varied rocks and minerals for sale in the silent auction during the monthly general meetings. Check out the table and make a bid; you just might be able to add another gorgeous rock to your collection.



Share you knowledge

At every general meeting, except December's meeting, someone shares their knowledge about some aspect of rocks, gems, or minerals. This is our Rock of the Month presentation. Recently, we've learned about opals, gold, and metal detecting. Members enjoy digging a little deeper into a topic and learning.

Have you become knowledgeable over the years about labradorite? Are you a geologist who could enlighten us about how rocks were formed? If you've been rock hounding for a while, perhaps you could hone in on a topic and share your knowledge in a Rock of the Month presentation. Please talk with a Board member to learn more.



Show and tell

Do you have a couple rocks or minerals that have piqued your interest? Following the Rock of the Month presentation, you are invited to share rocks from your collection. Perhaps they are meaningful to you because you wonder how they were formed, you find them especially beautiful, or they evoke memories or stories.



Field trips

The Washington State Mineral Council lists many field trips scheduled for this year, and you will find them in the table below. For updated information about field trips check out the website for the Washington State Mineral Council <https://mineralcouncil.wordpress.com/>

Contact the host a week before the trip

- At least a week before the trip, please contact the host and ask about
- New or updated details about the scheduled trip
- Whether you will need a Discover Pass, Trailhead Pass, or Forest Pass
- Fees
- Maps and directions

Club contact information

Marysville Rock Club and
Darrington Rock Club

Ed Lehman wsmced@hotmail.com
home: 425-334-6282
cell: 425-760-2786

NOA club: Tony Johnson 253-863-9238

Puyallup Valley Gem and Mineral Club: Dennis Bachchelor
360-870-8741

All Rockhounds Pow Wow

Larry Vess vessel3755@gmail.com
253-473-3908

Bring with you on the trip

Arrive at the meeting place 30 minutes before the start time, and bring

- Food and drinks for the day
- Appropriate clothing for any possible weather
- Cash if there are fees
- Tools
- Map and directions
- First aid kit

Word of the Month

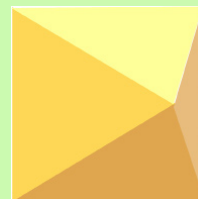
Crystallography

Crystallography is the science concerned with the structures of crystals.

To identify a crystal shape, scientists look at the number and shape of the faces (edges) and the angles between them.

One of the most common shapes is an octahedron, which has 8 sides and looks like two pyramids with their bottoms fused together.

Here is an illustration.



Magnetite is a mineral which forms octahedron crystals.

Date	Rock or Mineral	Location	Details
3/21	Geodes, zeolites, and calcite	Beaver Valley	Host: Marysville Rock Club Beaver Valley Rd Info Center Tools: hard rock
4/4	Fossils and morel mushrooms	Racehorse Creek	Host: Darrington Rock Club 9 am Hwy 542 at roundabout 10 miles from I-5 Tools: dig and light hardrock
4/18 – 4/19	Petrified wood	Saddle Mt Mattawa	Host: All Rockhounds Pow Wow 8 am Boat Launch Tools: dig and hard rock
5/9	Talc, listwonite, etc	Cascade River	Host: Darrington Rock Club small fee 9 am Marblemount, left turn Tools: hardrock
5/23	Rainbow chert, concretions	Red Bridge Verlot	Host: Darrington Rock Club 9 am Verlot Ranger Station Tools: light hardrock
6/23 – 6/28	Agate, jasper, thunder eggs, petrified wood	Madras, OR	Host: All Rockhounds Pow Wow 8 am Jefferson Fair Ground Tools: dig and hard rock
6/27	Petrified wood, maybe opal	Saddle Mt	Host: Marysville Rock Club 9 am Mattawa W Mattawa Lep Re Kon Market (Harvest Foods) Tools: dig and hard rock

Date	Rock or Mineral	Location	Details
7/20	Travertine, Sauk R bars	Sweetwater	Host: Darrington Rock Club 11 am Darrington Rock Show Tools: dig and hard rock
8/15 -8/16	Agate, jasper, opal, and petrified wood	Greenwater	Host: Dennis Bachchelor 360-870-8741 BBQ on Saturday 9 am Enumclaw Ranger Station Tools: dig and light hard rock
9/12 -9/13	Geodes, agate, jasper, and jade	Red Top/ Teaway	Host: All Rockhounds Pow Wow 8 am Teaway at Middle Fork Campground Tools: dig and hard rock
9/19	Thunder eggs, WA Lilypad, and fossils	Little Naches	Host: Tony Johnson 253-863-9238 10 am Hwy 410 and Forest Road 19 Tools: dig and light hard rock
10/24	Picture jasper	Money Creek Skykomish	Host: Marysville Rock Club 9 am Money Creek Campground Tools: dig and river bar pick
11/21	WA dalmatian stone, chert	Blanchard Hill	Host: Darrington Rock Club 9 am I-5 exit 240, Gas Mart Tools: hard rock

Sister club in Australia

Our sister club in Australia is the Atherton-Tableland Mineral & Lapidary Club in Tolga, Queensland. Connect to them on Facebook:

www.facebook.com/groups/197340266987276

One hundred million years ago the eastern edge of the Australian continent extended much farther to the east. Tectonic forces broke off and submerged into the ocean the eastern section while a rising mantle caused the remaining land to lift.

Beginning 4 million years ago large basalt flows filled river valleys and formed a relatively flat landscape. Following that period the volcanoes became more gaseous spewing lava in violent eruptions. This landscape is now called the Atherton Tablelands. You can learn more on Wikipedia.



This issue

Maplewood Rock and Gem
Club News

Volume 3

Publication Year: 69

News to share? A suggestion? A correction?

Please send news ideas and images you'd like to share to the newsletter editor, Nancy Samuels at mrgc@nancysamuels.com.