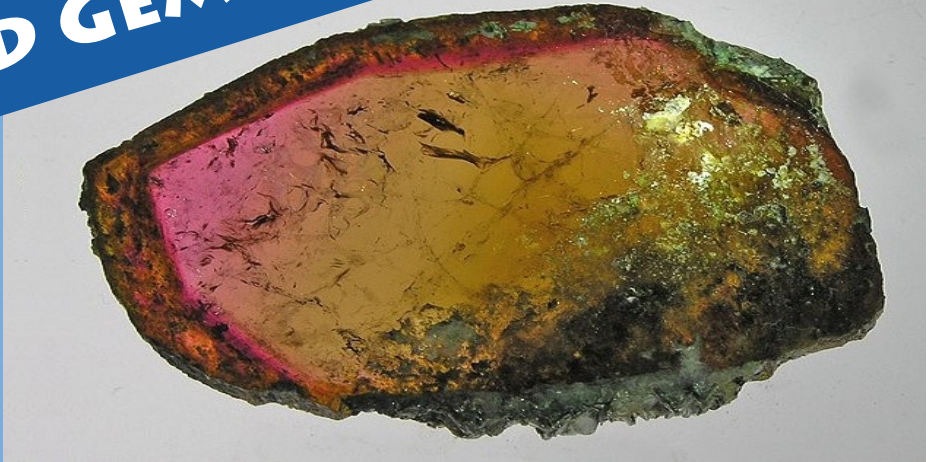


# MAPLEWOOD ROCK AND GEM CLUB

2021  
OCTOBER



## Inside this issue

Banner photo	1
Board meeting	5
Buy grit for your rock tumbler	4
Connect with us	5
Donate to the club	4
Facebook	4
Field trips	2
General meeting: Oct. 18	1
Image license attributions	5
October Birthdays	3
Sister club in Australia	6

## General meeting: October 18

Our meeting is at the clubhouse at 7 pm on October 18. If you want to attend, you need to sign up by emailing Sandra before the meeting. Also, you will need to show proof of vaccination before entering the building.

Every one of us wishes we could resume gathering together at the clubhouse for meetings and rock shows. Unfortunately, the Delta variant of COVID-19 is more contagious than the original virus. Our Board has looked at recommendations from the Center for Disease Control and other sources. Many people have good ideas for how to keep everyone safe while they spend time at the club, and our Board has listened. Then it was time for our Board to take the difficult step of choosing the path that seemed best.

We recognize that no path forward will be exactly what any one of us hopes for, but we trust our Board to choose the best path for our community.

## Banner photo

The image above is a large piece of tourmaline: over 5 inches wide. This colorful stone was found in Madagascar. The photo was taken by Rob Lavinsky of [iRocks](#), and is published here under the Creative Commons license, [BY-SA 3.0](#). The aspect ratio of the image on this page was altered to fit the space.

## Field trips

Questions? Email Ed Lehman at [wsmced2@outlook.com](mailto:wsmced2@outlook.com) or call him at (425) 334-6282 or (425) 760-2786.



### *November 13th at 9 am*

Meet: Take I-5 exit #240 and go toward Blanchard Hill. Meet at the Shell Gas Station by the exit.  
Looking for: Dalmation stone



*Dalmation Stone, a type of jasper*  
by [Sue Corbisez](#)  
License: [CC BY 3.0](#)

## Why do you collect rocks?

*by Lillian Haddock (1975)*

Someone asked a Rockhound once what she intended to do with a beautiful crystal-filled geode she had located.

The Rockhound paused, wondered that anyone would need to ask, looked at her treasure, and answered, "I'm going to look at it."

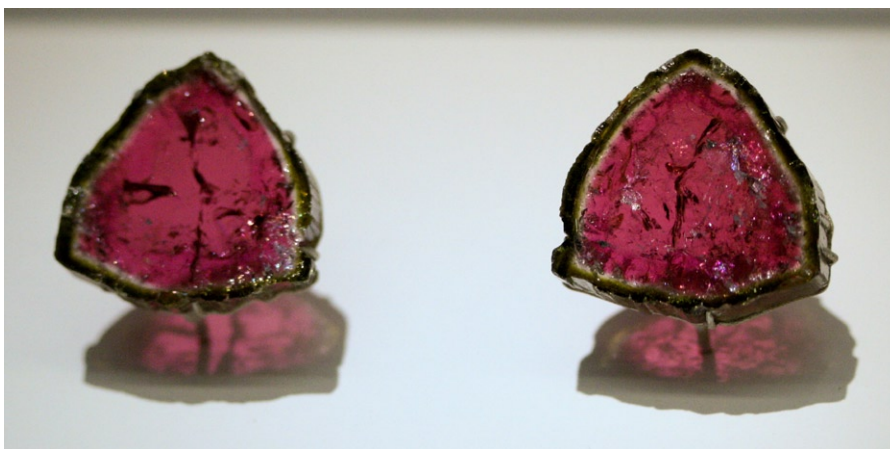
Why do you seek rocks?



## October Birthdays

Happy birthday to everyone born in October. You are fortunate to have two birthstones: opal and tourmaline.

Tourmaline is a mineral group with 38 types having different formulas. Each tourmaline variation is a crystalline boron silicate mineral compounded with elements such as aluminium, iron, magnesium, sodium, lithium, or potassium.



*Watermelon tourmaline slices*

By [Anne Petersen](#)

License: [CC BY-NC-ND 2.0](#)

## Ceylonese Sri Lankan Magnet

In the 17th century the Dutch India Company imported tourmaline from Sri Lanka because they were popular in Europe. The stones were called magnets because they could attract and repel hot ashes due to their pyroelectric properties. They may have been used to clean ash out of tobacco pipes.



*Natural Australian opal*

## Tourmaline basics

Category: Cyclosilicate

Formula: varies

Crystal system: trigonal

Crystal class: Ditrigonal pyramidal (3m)

Crystal habit: parallel and elongated acicular prisms

Color: usually black but can be colorless, brown, red, pink, orange, yellow, green, blue, or violet; can be bi-colored or tri-colored; can be neon green (rare) or electric blue (rare)

Cleavage: indistinct

Fracture: conchoidal, brittle, uneven

Mohs: 7.0 - 7.5

Luster: vitreous

Streak: white

Diaphaneity: transparent to opaque

Specific gravity: 3.06

Refractive index:  
 $n_{\omega} = 1.635 - 1.675$   
 $n_{\epsilon} = 1.610 - 1.650$

Pleochroism: moderate to strong

Ultraviolet fluorescence: pink stones can show very faint red to violet

## Maplewood membership

While the world around us seems in a state of confusion, we have the unique opportunity of having a nice place to meet with friends that we enjoy and the harmony of fellowship.

~ Merle DeGarmo, President 1974

## Buy grit for your rock tumbler

Contact Sandra to buy grit: ask.sandra@yahoo.com

## Donate to the club

Our club is a 501(c)(3) organization, so if you itemize deductions, you might receive a tax deduction. Ask your tax expert.

Checks can be made out to *MRGC* if you don't want your hand to cramp from writing the entire club name, *Maplewood Rock and Gem Club*. The club address is

8802 196th Street SW  
Edmonds, WA 98026

## Nature's magic

Lapidary is an art, mineralogy is a science, and collecting is — collecting.

What do they have in common? The love of nature and natural beauty, the desire to explore and find the treasures of the earth.

There is magic in an agate as surely as in an emerald.

~ Lillian Haddock 1975

## Facebook



Our [facebook page](#) has up to date information about what is happening at our club. When we have online auctions, they happen on our page.

We also have a Facebook group — [MRGC Sales and Trades](#) — which is open to members of our club.

## Board meeting

If you have questions for the board or if you'd like to attend a meeting, please email our Board President, Sandra: [ask.sandra@yahoo.com](mailto:ask.sandra@yahoo.com)

## Connect with us

Website: <http://www.maplewoodrockclub.com/>

Facebook page: [Maplewood Rock & Gem Club](#)

Facebook group for members: [MRGC Sales and Trades](#)

Address: 8802 196th St SW, Edmonds, Washington 98026

### Washington State Mineral Council

Our club, along with many other rock and gem clubs in the state, is a member of the [Washington State Mineral Council](#).

This organization helps us by

- advocating for access to public lands
- advocating for beneficial land use policies
- compiling and sharing maps and other information
- publicizing shows and field trips so members learn about and can participate in events at other clubs

Read their latest [Newsletter](#).



## Image license attributions

We use abbreviations in the license attributions. Here are the definitions.

CC: Creative Commons license

BY: attribute the author, link to the license, and indicate if changes were made.

SA: share alike - If you publish the image, you must use the same license.

ND: no derivatives - You may not alter the image.

NC: non-commercial use - You may not use the image for commercial use.

3.0 or other number: version of the license

## Sister club in Australia

Our sister club in Australia is the Atherton-Tableland Mineral & Lapidary Club in Tolga, Queensland. Connect to them on Facebook:

[www.facebook.com/groups/197340266987276](https://www.facebook.com/groups/197340266987276)

One hundred million years ago the eastern edge of the Australian continent extended much farther to the east. Tectonic forces broke off and submerged into the ocean the eastern section while a rising mantle caused the remaining land to lift.

Beginning 4 million years ago large basalt flows filled river valleys and formed a relatively flat landscape. Following that period the volcanoes became more gaseous spewing lava in violent eruptions. This landscape is now called the Atherton Tablelands. You can learn more on Wikipedia.



### This issue

Maplewood Rock and Gem  
Club News

Volume 10

Publication Year: 70

### News to share? A suggestion? A correction?

Please send news ideas and images you'd like to share to the newsletter editor, Nancy Samuels at [mrgc@nancysamuels.com](mailto:mrgc@nancysamuels.com).